

Saint John's Cancer Institute *Research Spotlight* **2024**



Faculty Publications

Saint John's
Cancer Institute
Saint John's Health Center
 Providence

Our research aims to shape clinical care to promote best practices, addressing global challenges in the fight against cancer.

In 2024, Saint John's Cancer Institute researchers published 106 peer-reviewed studies across more than a dozen key specialties and subspecialties, developed by 34 scientists and clinicians, excluding their staff and lab teams. Studies were far-reaching, involving internal and external collaborators, working together to understand tomorrow's oncology questions based on today's research-driven answers.

Many of our studies are guided by faculty-fellow mentoring research programs. Fellows participate in several areas including translational sciences, urology, breast oncology, neuroscience, endocrine, complex general surgery, and melanoma, working alongside their mentors.

The more research we can do, the more our patients can do with their lives.

**Saint John's
Cancer Institute**
Saint John's Health Center
 Providence

Warren Allen, MD

Diagnostic miRNA Signatures in Paired Tumor, Plasma, and Urine from Renal Cell Carcinoma Patients

<https://pubmed.ncbi.nlm.nih.gov/37791385/>

Bustos MA, Gottlieb J, Choe J, Suyeon R, Lin S, Allen WM, Krasne DL, Wilson TG, Hoon DSB, Linehan JA. Clinical Chemistry 2024 Oct 4;hvad133. DOI: 10.1093/clinchem/hvad133.

Impact of intra-tumoral immunity on predicting response and survival after neoadjuvant cisplatin-based chemotherapy in patients with muscle invasive bladder cancer.

<https://pubmed.ncbi.nlm.nih.gov/39119802/>

Mendoza-Valderrey A, Choe J, Kessler DM, Jimenez G, Li X, Kolker S, Allen W, Linehan JA, Twardowski PW, Ascierto ML. Cancer Med. 2024 Aug;13(15):e70088. doi: 10.1002/cam4.70088. PMID: 39119802



Maria Ascierto, Ph.D. [2024]

Immunogenomics and spatial proteomic mapping highlight distinct neuro-immune architectures in melanoma vs. non-melanoma-derived brain metastasis.

<https://pubmed.ncbi.nlm.nih.gov/39516255/>

Mendoza-Valderrey A, Dettmann E, Hanes D, Kessler DM, Danilova L, Rau K, Quan Y, Stern S, Barkhoudarian G, Bifulco C, Margolin K, Kolker S, Ascierto ML. BJC Rep. 2024 May 2;2(1):38. doi: 10.1038/s44276-024-00060-y.PMID: 39516255

Impact of intra-tumoral immunity on predicting response and survival after neoadjuvant cisplatin-based chemotherapy in patients with muscle invasive bladder cancer.

<https://pubmed.ncbi.nlm.nih.gov/39119802/>

Mendoza-Valderrey A, Choe J, Kessler DM, Jimenez G, Li X, Kolker S, Allen W, Linehan JA, Twardowski PW, Ascierto ML. Cancer Med. 2024 Aug;13(15):e70088. doi: 10.1002/cam4.70088. PMID: 39119802

Phase 1/2 study of monalizumab plus durvalumab in patients with advanced solid tumors.

<https://pubmed.ncbi.nlm.nih.gov/38309722/>

Patel SP, Alonso-Gordoa T, Banerjee S, Wang D, Naidoo J, Standifer NE, Palmer DC, Cheng LY, Kourtesis P, Ascierto ML, Das M, Diamond JR, Hellmann MD, Carneiro BA. J Immunother Cancer. 2024 Feb 2;12(2):e007340. doi: 10.1136/jitc-2023-007340. PMID: 38309722



Garni Barkhoudarian, MD

A phase I dose-escalation study of pulsatile afatinib in patients with recurrent or progressive brain cancer.

<https://pubmed.ncbi.nlm.nih.gov/38680990/>

Juarez TM, Gill JM, Heng A, Carrillo JA, Wagle N, Nomura N, Nguyen M, Truong J, Dobrawa L, Sivakumar W, Barkhoudarian G, Kelly DF, Kesari S. Neurooncol Adv. 2024 Mar 30;6(1):vdae049. doi: 10.1093/noajnl/vdae049. eCollection 2024 Jan-Dec. PMID: 38680990

A Prospective, Multicenter, Observational Study of Surgical vs Nonsurgical Management for Pituitary Apoplexy.

<https://pubmed.ncbi.nlm.nih.gov/37698130/>

Mamelak AN, Little AS, Gardner PA, Almeida JP, Recinos P, Soni P, Kshetry VR, Jane JA Jr, Barkhoudarian G, Kelly DF, Dodd R, Mukherjee D, Gersey ZC, Fukuhara N, Nishioka H, Kim EH, Litre CF, Sina E, Mazer MW, Cui Y, Bonert V. J Clin Endocrinol Metab. 2024 Jan 18;109(2):e711-e725. doi: 10.1210/clinem/dgad541. PMID: 37698130



Anton J. Bilchik, MD, Ph.D, MBA, FACS

Analysis of 10-year trends in Medicare Physician Fee Schedule payments in surgery.

<https://pubmed.ncbi.nlm.nih.gov/38262816/>

Sibia US, Millen JC, Klune JR, Bilchik A, Foshag LJ.

Surgery. 2024 Apr;175(4):920-926. doi: 10.1016/j.surg.2023.12.012. Epub 2024 Jan 22. PMID: 38262816

Early Experiences With Bundled Payments for Care Improvement for Major Bowel Surgery.

<https://pubmed.ncbi.nlm.nih.gov/38523411/>

Sibia US, Klune JR, Saiolghalam S, Bilchik A.

Am Surg. 2024 Jun;90(6):1390-1396. doi: 10.1177/00031348241241618. Epub 2024 Mar 24. PMID: 38523411

Evolving Gender Parity of Industry Research Funding to Surgical Oncologists: An Open Payments Database Analysis.

<https://pubmed.ncbi.nlm.nih.gov/38789614/>

Lizalek JM, Fitzpatrick BJ, Foley BL, Dougherty CE, Bilchik AJ, Mammen JMV, Santamaria-Barria JA.

Ann Surg Oncol. 2024 Sep;31(9):5499-5501. doi: 10.1245/s10434-024-15504-5.

Epub 2024 May 24. PMID: 38789614

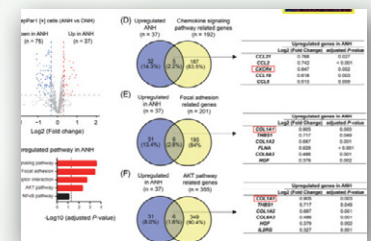
Induced collagen type-I secretion by hepatocytes of the melanoma liver metastasis is associated with a reduction in tumour-infiltrating lymphocytes.

<https://pubmed.ncbi.nlm.nih.gov/39496484/>

Mizuno S, Bustos MA, Hayashi Y, Abe K, Furuhashi S, Naeini Y, Xu X, Bilchik AJ,

Hoon DSB.

Clin Transl Med. 2024 Nov;14(11):e70067. doi: 10.1002/ctm2.70067. PMID: 39496484



Jennifer Bramen, Ph.D.

Beyond the hippocampus: Amygdala and memory functioning in older adults.

<https://pubmed.ncbi.nlm.nih.gov/38871129/>

Bookheimer TH, Ganapathi AS, Iqbal F, Popa ES, Mattinson J, Bramen JE, Bookheimer SY, Porter VR, Kim M, Glatt RM, Bookheimer AW, Merrill DA, Panos SE, Siddarth P.

Behav Brain Res. 2024 Aug 5;471:115112. doi: 10.1016/j.bbr.2024.115112. Epub 2024 Jun 12.

PMID: 38871129

The impact of physical exercise on hippocampal atrophy in mild cognitive impairment and Alzheimer's disease: a meta-analysis.

<https://pubmed.ncbi.nlm.nih.gov/38606637/>

Kress GT, Popa ES, Merrill DA, Bramen JE, Siddarth P.

Neuroreport. 2024 May 15;35(8):529-535. doi: 10.1097/WNR.0000000000002037. Epub 2024 Apr 12. PMID: 38606637



Matias Bustos, Ph.D.

Cell-free and extracellular vesicle microRNAs with clinical utility for solid tumors

<https://pubmed.ncbi.nlm.nih.gov/39129372/>

Hayashi Y, Millen J-C, Ramos RI, Linehan JA, Wilson TG, Hoon DSB, and Bustos MA.

Mol Oncol. 2024 Aug 11. DOI: 10.1002/1878-0261.13709.

Diagnostic miRNA Signatures in Paired Tumor, Plasma, and Urine from Renal Cell Carcinoma Patients

<https://pubmed.ncbi.nlm.nih.gov/37791385/>

Bustos MA, Gottlieb J, Choe J, Suyeon R, Lin S, Allen WM, Krasne DL, Wilson TG, Hoon DSB, Linehan JA.

Clinical Chemistry 2024 Oct 4:hvad133. DOI: 10.1093/clinchem/hvad133.

Genomic and Transcriptomic Landscape of HER2-Low Breast Cancer

<https://pubmed.ncbi.nlm.nih.gov/39302579/>

Bansal R, Adeyelu T, Elliott A, Walker P, Bustos MA, Rodriguez E, Accordino MK, Meisel J, Gatti-Mays ME, Hsu E, Lathrop K, Kaklamani V, Oberley M, Sledge G, Sammons SL, Graff SL.

Breast Cancer Res Treat. 2024 Sep 20. DOI: 10.1007/s10549-024-07495-4.



Impact of Cryopreserved Placental Allografts on Biochemical Recurrence in Prostate Cancer

<https://pubmed.ncbi.nlm.nih.gov/39272831/>

Gottlieb J, Hanes D, Bustos MA, Choe J, Luu A, Seizer D, Hoon DSB, Wilson TG.
Cancers 2024, 16(17), 2973. DOI: 10.3390/cancers16172973.

Induced collagen type-I secretion by hepatocytes of the melanoma liver metastasis is associated with a reduction in tumour-infiltrating lymphocytes.

<https://pubmed.ncbi.nlm.nih.gov/39496484/>

Mizuno S, Bustos MA, Hayashi Y, Abe K, Furuhashi S, Naeini Y, Xu X, Bilchik AJ, Hoon DSB.
Clin Transl Med. 2024 Nov;14(11):e70067. doi: 10.1002/ctm2.70067. PMID: 39496484

Interferon-induced factor 16 is required for STING stability and immune responses mediated by IFN- γ in metastatic melanoma

<https://pubmed.ncbi.nlm.nih.gov/39424359/>

Kobayashi Y, Hayashi Y, Hoon DSB, and Bustos MA.
J Immunother Cancer. 2024 Oct 18;12(10):e009590. DOI: 10.1136/jitc-2024-009590.

Interruption of the intratumor CD8⁺:Treg crosstalk Improves the efficacy of PD-1 immunotherapy

<https://pubmed.ncbi.nlm.nih.gov/38861924/>

Geels SN, Moshensky A, Sousa RS, Murat C, Bustos MA, Walker BL, Singh R, Harbour SN, Gutierrez G, Hwang M, Mempel TR, Weaver CT, Nie Q, Hoon DSB, Ganesan AK, Othy S, and Marangoni F.
Cancer cell 2024. DOI: 10.1016/j.ccell.2024.05.013.

Pilot Study of High-Dose Pemetrexed for Progressive Chordoma

<https://pubmed.ncbi.nlm.nih.gov/38047868/>

Kesari S, Wagle N, Carrillo JA, Sharma A, Nguyen M, Truong J, Gill JM, Nersesian R, Nomura N, Rahbarlayegh E, Barkhoudarian G, Sivakumar W, Kelly DF, Krauss HR, Bustos MA, Hoon DSB, Anker L, Singh AS, and Sankhala KK.
Clin Cancer Res. 2024 Jan 17;30(2):323-333. doi: 10.1158/1078-0432.CCR-23-2317.

Pilot study of plasma miRNA signature panel for differentiating single vs multiglandular parathyroid disease

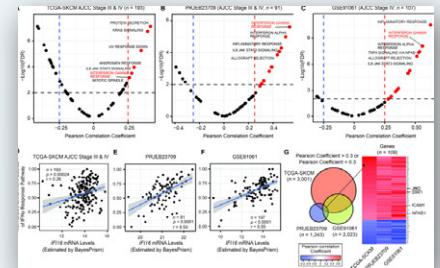
<https://pubmed.ncbi.nlm.nih.gov/39163258/>

Goldfarb M, Bustos MA, Moon J, Jackson K, Singer FR, Hoon DSB.
J Clin Endocrinol Metab. 2024 Aug 20;dgae577. doi: 10.1210/clinem/dgae577. PMID: 39163258

The Genomic, Transcriptomic, and Immunologic Landscape of HRAS

<https://pubmed.ncbi.nlm.nih.gov/38672653/>

Kareff SA, Trabolsi A, Rodriguez E, Krause HB, Samec T, Elliott A, Rodriguez E, Olazagasti C, Watson DC, Bustos MA, Hoon DSB, Graff SL, Antonarakis ES, Goel S, George Sledge G, Lopes G.
Cancers (Basel) 2024, 16, 1572. DOI: 10.3390/cancers16081572.



Jose Carrillo, MD

A Microfluidic, Multi-Antibody Cell Capture Method to Evaluate Tumor Cells in Cerebrospinal Fluid in Patients With Suspected Leptomeningeal Metastases.

<https://pubmed.ncbi.nlm.nih.gov/38797516/>

Sweed NT, Hsiao HC, Blouw B, Pircher TJ, Fisher D, Naluz KR, Mayer JA, Dugan MC, Sharma A, Carrillo J, Kesari S.
Arch Pathol Lab Med. 2024 May 27. doi: 10.5858/arpa.2023-0295-OA. PMID: 38797516

A phase 1 dose escalation of pratumumab in patients with refractory or recurrent gliomas or brain metastases.

<https://pubmed.ncbi.nlm.nih.gov/39465217/>

Carrillo J, Gill JM, Redfern C, Babic I, Nomura N, Shah DK, Carrick S, Kesari S.
Neurooncol Adv. 2024 Sep 30;6(1):vdae166. doi: 10.1093/noajnl/vdae166. eCollection 2024 Jan-Dec. PMID: 39465217

A phase I dose-escalation study of pulsatile afatinib in patients with recurrent or progressive brain cancer.

<https://pubmed.ncbi.nlm.nih.gov/38680990/>

Juarez TM, Gill JM, Heng A, Carrillo JA, Wagle N, Nomura N, Nguyen M, Truong J, Dobrawa L, Sivakumar W, Barkhoudarian G, Kelly DF, Kesari S.
Neurooncol Adv. 2024 Mar 30;6(1):vdae049. doi: 10.1093/noajnl/vdae049. eCollection 2024 Jan-Dec. PMID: 38680990



Pre-radiation Nivolumab plus ipilimumab in patients with newly diagnosed high-grade gliomas.

<https://pubmed.ncbi.nlm.nih.gov/39572979/>

Kesari S, Wojcinski A, Pabla S, Seager RJ, Gill JM, Carrillo JA, Wagle N, Park DJ, Nguyen M, Truong J, Takasumi Y, Chaiken L, Chang SC, Barkhoudarian G, Kelly DF, Juarez TM.

Oncoimmunology. 2024 Dec 31;13(1):2432728. doi: 10.1080/2162402X.2024.2432728. Epub 2024 Nov 21. PMID: 39572979

Richard Essner, MD, FACS

Are Nomograms Useful for Predicting Sentinel Lymph Node Status in Melanoma Patients?

<https://pubmed.ncbi.nlm.nih.gov/39552276/>

Lourdault K, Cowman AW, Hanes D, Scholer AJ, Aguilar T, Essner R.

J Surg Oncol. 2024 Nov 17. doi: 10.1002/jso.27976. PMID: 39552276

Implications of tumor-positive sentinel lymph nodes in single vs multiple nodal basins in melanoma.

<https://pubmed.ncbi.nlm.nih.gov/39040453/>

Reyes E, Lourdault K, Ramiscal JA, Stern S, Essner R.

Front Oncol. 2024 Jul 8;14:1416685. doi: 10.3389/fonc.2024.1416685. eCollection 2024.

PMID: 39040453.

Individualized Prediction for Risk of Recurrence in Stage I/II Melanoma Patients With Negative Sentinel Lymph Node.

<https://pubmed.ncbi.nlm.nih.gov/39611693/>

Chang SC, Lourdault K, Grunkemeier GL, Hanes DA, Chiu ST, Stern S, Essner R.

Cancer Med. 2024 Dec;13(23):e70441. doi: 10.1002/cam4.70441. PMID: 39611693

Is therapeutic lymph node dissection of value for lymph node recurrence in melanoma?

<https://pubmed.ncbi.nlm.nih.gov/37923660/>

Wilson AK, Lourdault K, Ostad T, Stern S, Essner R.

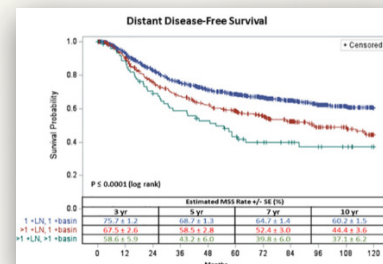
Am J Surg. 2024 Feb;228:258-263. doi: 10.1016/j.amjsurg.2023.10.035. Epub 2023 Oct 17. PMID: 37923660.

Socially vulnerable patients are more likely to fail outpatient management of symptomatic cholelithiasis.

<https://pubmed.ncbi.nlm.nih.gov/38657729/>

Sibia US, Klune JR, Feather CB, Rider D, Hanes DA, Essner R.

J Gastrointest Surg. 2024 Jul;28(7):1145-1150. doi: 10.1016/j.gassur.2024.04.017. Epub 2024 Apr 22. PMID: 38657729



Crystal Fancher, MD, FACS

Breast Conservation Project: Clinical Outcomes of Extreme Oncoplastic Breast-Conserving Therapy Versus Mastectomy for Large and Multiple Lesions.

<https://pubmed.ncbi.nlm.nih.gov/39048896/>

Jackson KM, Millen JC, Handy N, Orozco JIJ, Stern SL, Fancher CE, Grumley JG.

Ann Surg Oncol. 2024 Oct;31(11):7582-7593. doi: 10.1245/s10434-024-15799-4. Epub 2024 Jul 24.

PMID: 39048896

Comparing Costs: Does Extreme Oncoplastic Breast-Conserving Surgery Confer a Cost Benefit When Compared with Mastectomy and Reconstruction?

<https://pubmed.ncbi.nlm.nih.gov/38987370/>

Millen JC, Sibia U, Jackson K, Stern SL, Orozco JIJ, Fancher CE, Grumley J.

Ann Surg Oncol. 2024 Oct;31(11):7463-7470. doi: 10.1245/s10434-024-15711-0. Epub 2024 Jul 10. PMID: 38987370



Trevan Fischer, MD, FACS

Smoking Status and Survival in Patients With Early-Stage Primary Cutaneous Melanoma.

<https://pubmed.ncbi.nlm.nih.gov/38319662/>

Jackson KM, Jones PC, Fluke LM, Fischer TD, Thompson JF, Cochran AJ, Stern SL, Faries MB, Hoon DSB, Foshag LJ.

JAMA Netw Open. 2024 Feb 5;7(2):e2354751. doi: 10.1001/jamanetworkopen.2023.54751. PMID: 38319662



Leland Foshag, MD, FACS

Analysis of 10-year trends in Medicare Physician Fee Schedule payments in surgery.

<https://pubmed.ncbi.nlm.nih.gov/38262816/>

Sibia US, Millen JC, Klune JR, Bilchik A, Foshag LJ.

Surgery. 2024 Apr;175(4):920-926. doi: 10.1016/j.surg.2023.12.012. Epub 2024 Jan 22. PMID: 38262816

Smoking Status and Survival in Patients With Early-Stage Primary Cutaneous Melanoma.

<https://pubmed.ncbi.nlm.nih.gov/38319662/>

Jackson KM, Jones PC, Fluke LM, Fischer TD, Thompson JF, Cochran AJ, Stern SL, Faries MB, Hoon DSB, Foshag LJ.

JAMA Netw Open. 2024 Feb 5;7(2):e2354751. doi: 10.1001/jamanetworkopen.2023.54751. PMID: 38319662



Melanie Goldfarb, MD, MSc, FACS, FACE

Continuing De-escalation Trends: Is Adjuvant Radioactive Iodine Administration Truly Needed for Papillary Thyroid Carcinoma with Limited Cervical Disease?

<https://link.springer.com/article/10.1245/s10434-024-16590-1>

Goldfarb, M., Ullman, N.

Ann Surg Oncol (2024). <https://doi.org/10.1245/s10434-024-16590-1>

Evolution of the American Association of Endocrine Surgeons Collaborative Endocrine Surgery Quality Improvement Program, CESQIP.

<https://pubmed.ncbi.nlm.nih.gov/39414470/>

Mathur A, Alkhalili E, Beck T, Cisco R, Goldfarb M, Phay JE, Miller BS, Solórzano CC, Sippel RS, Rosen JE, Schneider DF, Inabnet WB 3rd.

Surgery. 2024 Dec;176(6):1776-1779. doi: 10.1016/j.surg.2024.05.048. Epub 2024 Oct 16.

Exploring the Genomic Landscape of Hepatobiliary Cancers to Establish a Novel Molecular Classification System.

<https://pubmed.ncbi.nlm.nih.gov/38254814/>

Scholer AJ, Marcus RK, Garland-Kledzik M, Ghosh D, Ensenyat-Mendez M, Germany J, Santamaria-Barria JA, Khader A, Orozco JIJ, Goldfarb M.

Cancers (Basel). 2024 Jan 11;16(2):325. doi: 10.3390/cancers16020325. PMID: 38254814

In the Heat of the Moment: Thermal Ablation for “All Things Thyroid”.

<https://pubmed.ncbi.nlm.nih.gov/39041633/>

Goldfarb M.

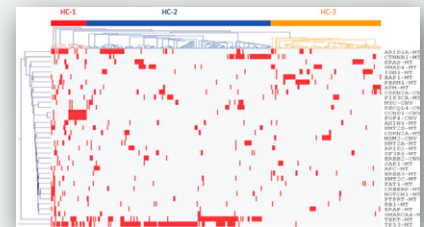
Thyroid. 2024 Aug;34(8):960-961. doi: 10.1089/thy.2024.0391. Epub 2024 Aug 7. PMID: 39041633

Pilot study of plasma miRNA signature panel for differentiating single vs multiglandular parathyroid disease.

<https://pubmed.ncbi.nlm.nih.gov/39163258/>

Goldfarb M, Bustos MA, Moon J, Jackson K, Singer FR, Hoon DSB.

J Clin Endocrinol Metab. 2024 Aug 20;dgae577. doi: 10.1210/clinem/dgae577. PMID: 39163258



Ora Gordon, MD

Acupuncture for Chronic Radiation-Induced Xerostomia in Head and Neck Cancer: A Multi-center Randomized Clinical Trial.

<https://pubmed.ncbi.nlm.nih.gov/38739392/>

Cohen L, Danhauer SC, Garcia MK, Dressler EV, Rosenthal DI, Chambers MS, Cusimano A, Brown WM, Ochoa JM, Yang P, Chiang JS, Gordon O, Crutcher R, Kim JK, Russin MP, Lukenbill J, Porosnicu M, Yost KJ, Weaver KE, Lesser GJ.

JAMA Netw Open. 2024 May 1;7(5):e2410421. doi: 10.1001/jamanetworkopen.2024.10421. PMID: 38739392

Experiences across a genetic screening and testing programme pathway: a qualitative study of mammogram patient perspectives.

<https://pubmed.ncbi.nlm.nih.gov/39448212/>

Devine C, Emery KR, Childers KK, Brown S, Gordon O, Roth SE.

BMJ Open. 2024 Oct 23;14(10):e089884. doi: 10.1136/bmjopen-2024-089884. PMID: 39448212



The role of family history in predicting germline pathogenic variant carriers who develop pancreatic cancer: Results of a multicenter collaboration.

<https://pubmed.ncbi.nlm.nih.gov/38809542/>

Karloski E, Dudley B, Diergaarde B, Blanco A, Everett JN, Levinson E, Rangarajan T, Stanich PP, Childers K, Brown S, Drogan C, Cavestro GM, Gordon K, Singh A, Simeone DM, Reich H, Kastrinos F, Zakalik D, Hampel H, Pearlman R, Gordon OK, Kupfer SS, Puzzono M, Zuppardo RA, Brand RE.
Cancer. 2024 Oct 1;130(19):3297-3304. doi: 10.1002/cncr.35383. Epub 2024 May 29. PMID: 38809542

Validation of a clinical breast cancer risk assessment tool combining a polygenic score for all ancestries with traditional risk factors.

<https://pubmed.ncbi.nlm.nih.gov/38829299/>

Mabey B, Hughes E, Kucera M, Simmons T, Hullinger B, Pederson HJ, Yehia L, Eng C, Garber J, Gary M, Gordon O, Klemp JR, Mukherjee S, Vijai J, Offit K, Olopade OI, Pruthi S, Kurian A, Robson ME, Whitworth PW, Pal T, Ratzel S, Wagner S, Lanchbury JS, Taber KJ, Slavin TP, Gutin A.
Genet Med. 2024 Jul;26(7):101128. doi: 10.1016/j.gim.2024.101128. Epub 2024 Jun 3. PMID: 38829299

Shanthi Gowrinathan MD

A Survey of 251 Facial Paralysis Patients to Assess Their Educational Preparedness and Symptom Management after Treatment of Vestibular Schwannoma

<https://www.researchgate.net/publication/386879995>

Garni Barkhoudarian, Walavan Sivakumar, Courtney J. Voelker, Shanthi Gowrinathan, Akanksha Sharma, Hsin-Fang Li, Amit Kochhar
Journal of Neurological Surgery Part B Skull Base. December 2024. DOI:10.1055/a-2446-9674



Chester Griffiths, MD

Comparative Analysis of Endoscope Obscuration With Utilization of an Endonasal Access Guide for Endonasal Skull Base Surgery.

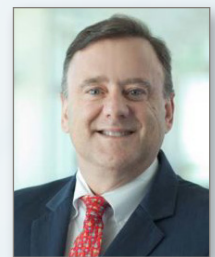
<https://pubmed.ncbi.nlm.nih.gov/38967455/>

Barkhoudarian G, Zhou D, Avery MB, Khan U, Mallari RJ, Emerson J, Griffiths C, Kelly DF.
Oper Neurosurg (Hagerstown). 2024 Jul 5. doi: 10.1227/ons.0000000000001267. PMID: 38967455

Endonasal surgery high-risk carotid injury timeout checklist: implementation, institutional protocol and experience.

<https://pubmed.ncbi.nlm.nih.gov/39542908/>

Barkhoudarian G, Pahlevani M, Ratnam S, Mallari RJ, Griffiths C, Kelly DF.
Acta Neurochir (Wien). 2024 Nov 15;166(1):454. doi: 10.1007/s00701-024-06340-3. PMID: 39542908

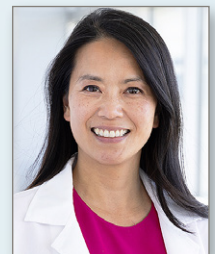


Janie Grumley, MD, FACS

Biological effects of intraoperative radiation therapy: histopathological changes and immunomodulation in breast cancer patients

<https://pubmed.ncbi.nlm.nih.gov/38720889/>

Orozco JIJ, Valdez BJ, Matsuba C, Simanonok MP, Ensenyat-Mendez M, Ramiscal JAB, Salomon MP, Takasumi Y, Grumley JG.
Front Immunol. 2024 Apr 24;15:1373497. doi: 10.3389/fimmu.2024.1373497. eCollection 2024. PMID: 38720889



Breast Conservation Project: Clinical Outcomes of Extreme Oncoplastic Breast-Conserving Therapy Versus Mastectomy for Large and Multiple Lesions.

<https://pubmed.ncbi.nlm.nih.gov/39048896/>

Jackson KM, Millen JC, Handy N, Orozco JIJ, Stern SL, Fancher CE, Grumley JG.
Ann Surg Oncol. 2024 Oct;31(11):7582-7593. doi: 10.1245/s10434-024-15799-4. Epub 2024 Jul 24. PMID: 39048896

Comparing Costs: Does Extreme Oncoplastic Breast-Conserving Surgery Confer a Cost Benefit When Compared with Mastectomy and Reconstruction?

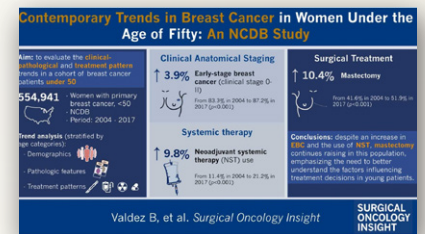
<https://pubmed.ncbi.nlm.nih.gov/38987370/>

Millen JC, Sibia U, Jackson K, Stern SL, Orozco JIJ, Fancher CE, Grumley J.
Ann Surg Oncol. 2024 Oct;31(11):7463-7470. doi: 10.1245/s10434-024-15711-0. Epub 2024 Jul 10. PMID: 38987370

Contemporary trends in breast cancer in females under the age of fifty: An NCDB study.

<https://www.sciencedirect.com/science/article/pii/S2950247024000586>

Betsy J. Valdez, Madison Grumley, Shu-Ching Chang, Jennifer K. Keller, Janie G. Grumley, Javier I.J. Orozco,
Surgical Oncology Insight, Volume 1, Issue 2, 2024, 100049, ISSN 2950-2470,
<https://doi.org/10.1016/j.soi.2024.100049>.



Radiation-Induced Breast Angiosarcoma: Updates on a Rare Disease.

<https://link.springer.com/article/10.1007/s12609-024-00542-5>

Jackson, K.M., Grumley, J.G.
Curr Breast Cancer Rep 16, 177–184 (2024). <https://doi.org/10.1007/s12609-024-00542-5>

Dave S.B. Hoon, Ph.D., Director, SJCI Translational Research

Cell-free and extracellular vesicle microRNAs with clinical utility for solid tumors

<https://pubmed.ncbi.nlm.nih.gov/39129372/>

Hayashi Y, Millen J-C, Ramos RI, Linehan JA, Wilson TG, Hoon DSB, and Bustos MA.
Mol Oncol. 2024 Aug 11. DOI: 10.1002/1878-0261.13709.



Diagnostic miRNA Signatures in Paired Tumor, Plasma, and Urine Specimens from Renal Cell Carcinoma Patients

<https://pubmed.ncbi.nlm.nih.gov/37791385/>

Bustos MA, Gottlieb J, Choe J, Suyeon R, Lin SY, Allen WM, Krasne DL, Wilson TG, Hoon DSB, Linehan JA.
Clin Chem. 2024 Oct 4;hvac133. doi: 10.1093/clinchem/hvac133. PMID: 37791385

Genomic, immunologic, and prognostic associations of TROP2 (TACSTD2) expression in solid tumors.

<https://pubmed.ncbi.nlm.nih.gov/38986529/>

Morgenstern-Kaplan D, Kareff SA, Trabolsi A, Rodriguez E, Krause H, Ribeiro JR, Tan H, Antonarakis ES, Lou E, Nagasaka M, Algaze S, Lenz HJ, Liu SV, Halmos B, Hoon DSB, Seeber A, Ma PC, El-Deiry WS, Vanderwalde AM, Lopes G.
Oncologist. 2024 Nov 4;29(11):e1480-e1491. doi: 10.1093/oncolo/oyae168. PMID: 38986529

Impact of Cryopreserved Placental Allografts on Biochemical Recurrence in Prostate Cancer

<https://pubmed.ncbi.nlm.nih.gov/39272831/>

Gottlieb J, Hanes D, Bustos MA, Choe J, Luu A, Seizer D, Hoon DSB, Wilson TG.
Cancers 2024, 16(17), 2973. DOI: 10.3390/cancers16172973.

Induced collagen type-I secretion by hepatocytes of the melanoma liver metastasis is associated with a reduction in tumour-infiltrating lymphocytes.

<https://pubmed.ncbi.nlm.nih.gov/39496484/>

Mizuno S, Bustos MA, Hayashi Y, Abe K, Furuhashi S, Naeini Y, Xu X, Bilchik AJ, Hoon DSB.
Clin Transl Med. 2024 Nov;14(11):e70067. doi: 10.1002/ctm2.70067. PMID: 39496484

Interferon-induced factor 16 is required for STING stability and immune responses mediated by IFN- γ in metastatic melanoma

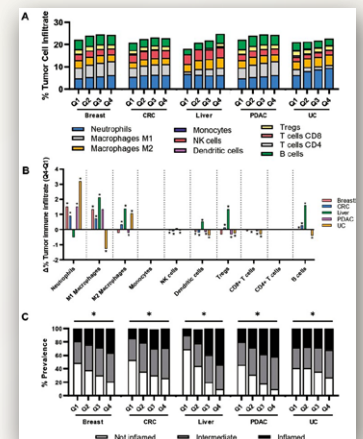
<https://pubmed.ncbi.nlm.nih.gov/39424359/>

Kobayashi Y, Hayashi Y, Hoon DSB, and Bustos MA.
J Immunother Cancer. 2024 Oct 18;12(10):e009590. DOI: 10.1136/jitc-2024-009590.

Interruption of the intratumor CD8+ T cell:Treg crosstalk improves the efficacy of PD-1 immunotherapy.

<https://pubmed.ncbi.nlm.nih.gov/38861924/>

Geels SN, Moshensky A, Sousa RS, Murat C, Bustos MA, Walker BL, Singh R, Harbour SN, Gutierrez G, Hwang M, Mempel TR, Weaver CT, Nie Q, Hoon DSB, Ganesan AK, Othy S, Marangoni F.
Cancer Cell. 2024 Jun 10;42(6):1051-1066.e7. doi: 10.1016/j.ccell.2024.05.013. PMID: 38861924



MRI-derived radiomics assessing tumor-infiltrating macrophages enable prediction of immune-phenotype, immunotherapy response and survival in glioma.

<https://pubmed.ncbi.nlm.nih.gov/38291499/>

Chen D, Zhang R, Huang X, Ji C, Xia W, Qi Y, Yang X, Lin L, Wang J, Cheng H, Tang W, Yu J, Hoon DSB, Zhang J, Gao X, Yao Y. Biomark Res. 2024 Jan 31;12(1):14. doi: 10.1186/s40364-024-00560-6. PMID: 38291499

Mutation burden and anti-PD-1 outcomes are not universally associated with immune cell infiltration or lymphoid activation.

<https://pubmed.ncbi.nlm.nih.gov/39577419/>

Hsiehchen D, Elliott A, Xiu J, Seeber A, El-Deiry W, Antonarakis ES, Graff SL, Hall MJ, Borghaei H, Hoon DSB, Liu SV, Ma PC, McKay RR, Wise-Draper T, Marshall J, Sledge GW, Spetzler D, Zhu H.

Cancer Cell. 2024 Nov 13;S1535-6108(24)00405-7. doi: 10.1016/j.ccell.2024.10.017. PMID: 39577419

Natural Killer Cell Infiltration in Prostate Cancers Predict Improved Patient Outcomes.

<https://pubmed.ncbi.nlm.nih.gov/38418892/>

Zorko NA, Makovec A, Elliott A, Kellen S, Lozada JR, Arafa AT, Felices M, Shackelford M, Barata P, Zakharia Y, Narayan V, Stein MN, Zarrabi KK, Patniak A, Bilen MA, Radovich M, Sledge G, El-Deiry WS, Heath EI, Hoon DSB, Nabhan C, Miller JS, Hwang JH, Antonarakis ES.

Prostate Cancer Prostatic Dis. 2024 Feb 28;10.1038/s41391-024-00797-0. doi: 10.1038/s41391-024-00797-0. PMID: 38418892

Norepinephrine induces anoikis resistance in high-grade serous ovarian cancer precursor cells.

<https://pubmed.ncbi.nlm.nih.gov/38271085/>

Reavis HD, Gysler SM, McKenney GB, Knarr M, Lusk HJ, Rawat P, Rendulich HS, Mitchell MA, Berger DS, Moon JS, Ryu S, Mainigi M, Iwanicki MP, Hoon DS, Sanchez LM, Drapkin R. JCI

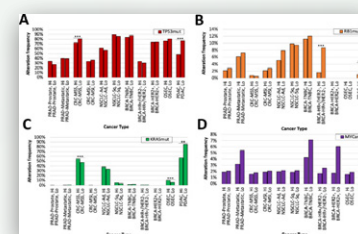
Insight. 2024 Mar 8;9(5):e170961. doi: 10.1172/jci.insight.170961. PMID: 38271085

Pan-Cancer Interrogation of B7-H3 (CD276) as an Actionable Therapeutic Target Across Human Malignancies.

<https://pubmed.ncbi.nlm.nih.gov/38709075/>

Miller CD, Lozada JR, Zorko NA, Elliott A, Makovec A, Radovich M, Heath EI, Agarwal N, McKay RR, Garje R, Bastos BR, Hoon DSB, Orme JJ, Sartor O, VanderWalde A, Nabhan C, Sledge G, Shenderov E, Dehm SM, Lou E, Miller JS, Hwang JH, Antonarakis ES.

Cancer Res Commun. 2024 May 30;4(5):1369-1379. doi: 10.1158/2767-9764.CRC-23-0546. PMID: 38709075



Pilot Study of High-Dose Pemetrexed in Patients with Progressive Chordoma

<https://pubmed.ncbi.nlm.nih.gov/38047868/>

S Kesari, N Wagle, JA Carrillo, A Sharma, M Nguyen, J Truong, JM Gill, R Nersesian, N Nomura, E Rahbarlayegh, G Barkhoudarian, W Sivakumar, DF Kelly, H Krauss, MA Bustos, D Hoon, L Anker, A Singh, K Sankhala, TM Juarez

Clin Cancer Res. 2023 Dec 4;OF1-OF11. doi: 10.1158/1078-0432.CCR-23-2317. PMID: 38047868

Pilot study of plasma miRNA signature panel for differentiating single vs multiglandular parathyroid disease.

<https://pubmed.ncbi.nlm.nih.gov/39163258/>

Goldfarb M, Bustos MA, Moon J, Jackson K, Singer FR, Hoon DSB.

J Clin Endocrinol Metab. 2024 Aug 20;dgae577. doi: 10.1210/clinem/dgae577. PMID: 39163258

Preanalytical considerations in quantifying circulating miRNAs that predict end-stage kidney disease in diabetes.

<https://pubmed.ncbi.nlm.nih.gov/38912578/>

Satake E, Krolewski B, Kobayashi H, Md Dom ZI, Ricca J, Wilson JM, Hoon DS, Duffin KL, Pezolesi MG, Krolewski AS. JCI Insight. 2024 Jun 24;9(12):e174153. doi: 10.1172/jci.insight.174153. PMID: 38912578

Repurposing colforsin daropate to treat MYC-driven high-grade serous ovarian carcinomas.

<https://pubmed.ncbi.nlm.nih.gov/39561220/>

Knarr MJ, Moon J, Rawat P, DiFeo A, Hoon DSB, Drapkin R.

Sci Signal. 2024 Nov 19;17(863):eado8303. doi: 10.1126/scisignal.ado8303. Epub 2024 Nov 19. PMID: 39561220

Smoking Status and Survival in Patients With Early-Stage Primary Cutaneous Melanoma.

<https://pubmed.ncbi.nlm.nih.gov/38319662/>

Jackson KM, Jones PC, Fluke LM, Fischer TD, Thompson JF, Cochran AJ, Stern SL, Faries MB, Hoon DSB, Foshag LJ.

JAMA Netw Open. 2024 Feb 5;7(2):e2354751. doi: 10.1001/jamanetworkopen.2023.54751. PMID: 38319662

Tissue-specific thresholds of mutation burden associated with anti-PD-1/L1 therapy benefit and prognosis in microsatellite-stable cancers.

<https://pubmed.ncbi.nlm.nih.gov/38528112/>

Muquith M, Espinoza M, Elliott A, Xiu J, Seeber A, El-Deiry W, Antonarakis ES, Graff SL, Hall MJ, Borghaei H, Hoon DSB, Liu SV, Ma PC, McKay RR, Wise-Draper T, Marshall J, Sledge GW, Spetzler D, Zhu H, Hsiehchen D.
Nat Cancer. 2024 Jul;5(7):1121-1129. doi: 10.1038/s43018-024-00752-x. Epub 2024 Mar 25. PMID: 38528112

Vimentin is a ubiquitination and degradation substrate of the ubiquitin ligase KPC1

<https://doi.org/10.1016/j.bbrc.2024.151231>

Yossi Gottfried, Chen Lulu-Shimron, Gilad Goldhirsh, Yael Fisher, Tamar Ziv, Dave S.B. Hoon, Yelena Kravtsova-Ivantsiv, Aaron Ciechanover
Biochemical and Biophysical Research Communications. 2024 December.

Daniel Kelly, MD

A phase I dose-escalation study of pulsatile afatinib in patients with recurrent or progressive brain cancer.

<https://pubmed.ncbi.nlm.nih.gov/38680990/>

Juarez TM, Gill JM, Heng A, Carrillo JA, Wagle N, Nomura N, Nguyen M, Truong J, Dobrawa L, Sivakumar W, Barkhoudarian G, Kelly DF, Kesari S.
Neurooncol Adv. 2024 Mar 30;6(1):vdae049. doi: 10.1093/noajnl/vdae049. eCollection 2024 Jan-Dec. PMID: 38680990



A Prospective, Multicenter, Observational Study of Surgical vs Nonsurgical Management for Pituitary Apoplexy.

<https://pubmed.ncbi.nlm.nih.gov/37698130/>

Mamelak AN, Little AS, Gardner PA, Almeida JP, Recinos P, Soni P, Kshetry VR, Jane JA Jr, Barkhoudarian G, Kelly DF, Dodd R, Mukherjee D, Gersey ZC, Fukuhara N, Nishioka H, Kim EH, Litre CF, Sina E, Mazer MW, Cui Y, Bonert V. J Clin Endocrinol Metab. 2024 Jan 18;109(2):e711-e725. doi: 10.1210/clinem/dgad541. PMID: 37698130

A Reliable Closure Technique for Retromastoid Craniotomy to Avoid Cerebrospinal Fluid Leaks and Meningitis.

https://journals.lww.com/neurosurgpraonline/fulltext/2024/09000/a_reliable_closure_technique_for_retromastoid.5.aspx

Garni Barkhoudarian, R. Justin Garling, Regin Jay Mallari, Walavan Sivakumar, Daniel F Kelly
Neurosurgery Practice 5(3):e00086, September 2024. | DOI: 10.1227/neuprac.0000000000000086

Comparative Analysis of Endoscope Obscuration With Utilization of an Endonasal Access Guide for Endonasal Skull Base Surgery.

<https://pubmed.ncbi.nlm.nih.gov/38967455/>

Barkhoudarian G, Zhou D, Avery MB, Khan U, Mallari RJ, Emerson J, Griffiths C, Kelly DF.
Oper Neurosurg (Hagerstown). 2024 Jul 5. doi: 10.1227/ons.0000000000001267. PMID: 38967455

Endonasal surgery high-risk carotid injury timeout checklist: implementation, institutional protocol and experience.

<https://pubmed.ncbi.nlm.nih.gov/39542908/>

Barkhoudarian G, Pahlevani M, Ratnam S, Mallari RJ, Griffiths C, Kelly DF.
Acta Neurochir (Wien). 2024 Nov 15;166(1):454. doi: 10.1007/s00701-024-06340-3. PMID: 39542908

Pilot Study of High-Dose Pemetrexed in Patients with Progressive Chordoma.

<https://pubmed.ncbi.nlm.nih.gov/38047868/>

Kesari S, Wagle N, Carrillo JA, Sharma A, Nguyen M, Truong J, Gill JM, Nersesian R, Nomura N, Rahbarlayegh E, Barkhoudarian G, Sivakumar W, Kelly DF, Krauss H, Bustos MA, Hoon DSB, Anker L, Singh AS, Sankhala KK, Juarez TM. Clin Cancer Res. 2024 Jan 17;30(2):323-333. doi: 10.1158/1078-0432.CCR-23-2317. PMID: 38047868

Pre-radiation Nivolumab plus ipilimumab in patients with newly diagnosed high-grade gliomas.

<https://pubmed.ncbi.nlm.nih.gov/39572979/>

Kesari S, Wojcinski A, Pabla S, Seager RJ, Gill JM, Carrillo JA, Wagle N, Park DJ, Nguyen M, Truong J, Takasumi Y, Chaiken L, Chang SC, Barkhoudarian G, Kelly DF, Juarez TM.
Oncoimmunology. 2024 Dec 31;13(1):2432728. doi: 10.1080/2162402X.2024.2432728. Epub 2024 Nov 21. PMID: 39572979

Santosh Kesari, MD, Ph.D.



3D Brain Vascular Niche Model Captures Invasive Behavior and Gene Signatures of Glioblastoma.

<https://pubmed.ncbi.nlm.nih.gov/39026692/>

Lee VK, Tejero R, Silvia N, Sattiraju A, Ramakrishnan A, Shen L, Wojcinski A, Kesari S, Friedel RH, Zou H, Dai G. bioRxiv. 2024 Jul 13:2024.07.09.601756. doi: 10.1101/2024.07.09.601756. PMID: 39026692

A Health Care Clinical Data Platform for Rapid Deployment of Artificial Intelligence and Machine Learning Algorithms for Cancer Care and Oncology Clinical Trials.

<https://pubmed.ncbi.nlm.nih.gov/39466099/>

Sengupta S, Rao R, Kaufman Z, Stuhlmiller TJ, Wong KK, Kesari S, Shapiro MA, Kramer GA. N C Med J. 2024 Jun;85(4):270-273. doi: 10.18043/001c.120572. PMID: 39466099

A Microfluidic, Multi-Antibody Cell Capture Method to Evaluate Tumor Cells in Cerebrospinal Fluid in Patients With Suspected Leptomeningeal Metastases.

<https://pubmed.ncbi.nlm.nih.gov/38797516/>

Sweed NT, Hsiao HC, Blouw B, Pircher TJ, Fisher D, Naluz KR, Mayer JA, Dugan MC, Sharma A, Carrillo J, Kesari S. Arch Pathol Lab Med. 2024 May 27. doi: 10.5858/arpa.2023-0295-OA. PMID: 38797516

A phase 1 dose escalation of pratumumab in patients with refractory or recurrent gliomas or brain metastases.

<https://pubmed.ncbi.nlm.nih.gov/39465217/>

Carrillo J, Gill JM, Redfern C, Babic I, Nomura N, Shah DK, Carrick S, Kesari S. Neurooncol Adv. 2024 Sep 30;6(1):vdae166. doi: 10.1093/noajnl/vdae166. eCollection 2024 Jan-Dec. PMID: 39465217

A phase I dose-escalation study of pulsatile afatinib in patients with recurrent or progressive brain cancer.

<https://pubmed.ncbi.nlm.nih.gov/38680990/>

Juarez TM, Gill JM, Heng A, Carrillo JA, Wagle N, Nomura N, Nguyen M, Truong J, Dobrawa L, Sivakumar W, Barkhoudarian G, Kelly DE, Kesari S. Neurooncol Adv. 2024 Mar 30;6(1):vdae049. doi: 10.1093/noajnl/vdae049. eCollection 2024 Jan-Dec. PMID: 38680990

A real-world observation of patients with glioblastoma treated with a personalized peptide vaccine.

<https://pubmed.ncbi.nlm.nih.gov/39127809/>

Latzer P, Zelba H, Battke F, Reinhardt A, Shao B, Bartsch O, Rabsteyn A, Harter J, Schulze M, Okech T, Golf A, Kyzirakos-Feger C, Kayser S, Pieper N, Feldhahn M, Wünsche J, Seitz C, Hadaschik D, Garbe C, Hauser TK, la Fougère C, Biskup D, Brooke D, Parker D, Martens UM, Illerhaus G, Blumenthal DT, Merrell R, Lorenzo LS, Hidvégi M, de Robles P, Kebir S, Li WW, Li VW, Williams M, Miller AM, Kesari S, Castro M, Desjardins A, Ashley DM, Friedman HS, Wen PY, Neil EC, Iwamoto FM, Sipos B, Geletneky K, Zender L, Glas M, Reardon DA, Biskup S. Nat Commun. 2024 Aug 11;15(1):6870. doi: 10.1038/s41467-024-51315-8. PMID: 39127809

BETA prime: a first-in-man phase 1 study of AdAPT-001, an armed oncolytic adenovirus for solid tumors.

<https://pubmed.ncbi.nlm.nih.gov/38146006/>

Conley AP, Roland CL, Bessudo A, Gastman BR, Villaflor VM, Larson C, Reid TR, Caroën S, Oronsky B, Stirn M, Williams J, Burbano E, Coyle A, Barve MA, Wagle N, Abrouk N, Kesari S. Cancer Gene Ther. 2024 Apr;31(4):517-526. doi: 10.1038/s41417-023-00720-0. Epub 2023 Dec 25. PMID: 38146006

Biological and prognostic relevance of epigenetic regulatory genes in high-grade gliomas.

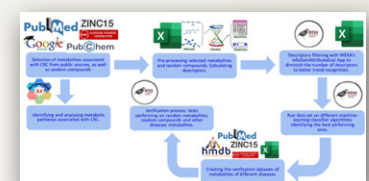
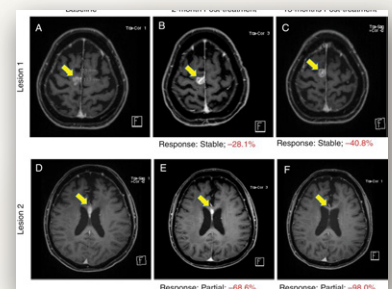
<https://pubmed.ncbi.nlm.nih.gov/39553337/>

Aulakh S, Xiu J, Hinton A, Darabi S, Demeure MJ, Sengupta S, Kesari S, Ashley DM, Sumrall AL, Glantz MJ, Spetzler D. Neurooncol Adv. 2024 Oct 4;6(1):vdae169. doi: 10.1093/noajnl/vdae169. eCollection 2024 Jan-Dec. PMID: 39553337

Colorectal Cancer Detection via Metabolites and Machine Learning.

<https://pubmed.ncbi.nlm.nih.gov/38785522/>

Yang R, Tsigelny IF, Kesari S, Kouznetsova VL. Curr Issues Mol Biol. 2024 Apr 30;46(5):4133-4146. doi: 10.3390/cimb46050254. PMID: 38785522



Deep Learning Segmentation of Infiltrative and Enhancing Cellular Tumor at Pre- and Posttreatment Multishell Diffusion MRI of Glioblastoma.

<https://pubmed.ncbi.nlm.nih.gov/39166970/>

Gagnon L, Gupta D, Mastorakos G, White N, Goodwill V, McDonald CR, Beaumont T, Conlin C, Seibert TM, Nguyen U, Hattangadi-Gluth J, Kesari S, Schulte JD, Piccioni D, Schmainda KM, Farid N, Dale AM, Rudie JD. Radiol Artif Intell. 2024 Sep;6(5):e230489. doi: 10.1148/ryai.230489. PMID: 39166970

Development of a Diagnostic Model for Pancreatic Ductal Adenocarcinoma Using Machine Learning and Blood-Based miRNAs.

<https://pubmed.ncbi.nlm.nih.gov/39231457/>

Tang JY, Kouznetsova VL, Kesari S, Tsigelny IF. Oncology. 2024 Sep 4;1-10. doi: 10.1159/000540329. PMID: 39231457

Drug delivery in leptomeningeal disease: Navigating barriers and beyond.

<https://pubmed.ncbi.nlm.nih.gov/38995190/>

Arshad N, Biswas N, Gill J, Kesari S, Ashili S. Drug Deliv. 2024 Dec;31(1):2375521. doi: 10.1080/10717544.2024.2375521. Epub 2024 Jul 12. PMID: 38995190

Efficient use of binned data for imputing univariate time series data.

<https://pubmed.ncbi.nlm.nih.gov/39234189/>

Darji J, Biswas N, Padul V, Gill J, Kesari S, Ashili S. Front Big Data. 2024 Aug 21;7:1422650. doi: 10.3389/fdata.2024.1422650. eCollection 2024. PMID: 39234189

Evaluation of the EMulate Therapeutics Voyager's ultra-low radiofrequency energy in murine model of glioblastoma.

<https://pubmed.ncbi.nlm.nih.gov/38594769/>

Mukthavaram R, Jiang P, Pastorino S, Nomura N, Lin F, Kesari S. Bioelectron Med. 2024 Apr 10;10(1):10. doi: 10.1186/s42234-024-00143-8. PMID: 38594769

Hypoxia drives shared and distinct transcriptomic changes in two invasive glioma stem cell lines.

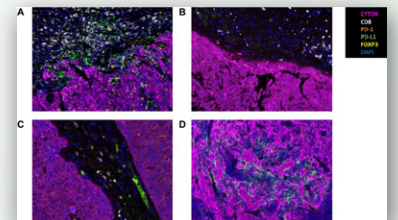
<https://pubmed.ncbi.nlm.nih.gov/38538643/>

Marallano VJ, Ughetta ME, Tejero R, Nanda S, Ramalingam R, Stalbow L, Sattiraju A, Huang Y, Ramakrishnan A, Shen L, Wojcinski A, Kesari S, Zou H, Tsankov AM, Friedel RH. Sci Rep. 2024 Mar 27;14(1):7246. doi: 10.1038/s41598-024-56102-5. PMID: 38538643

Low PD-L1 expression, MAP2K2 alterations, and enriched HPV gene signatures characterize brain metastases in head and neck squamous cell carcinoma.

<https://pubmed.ncbi.nlm.nih.gov/39438862/>

Dennis MJ, Pavlick DC, Kacew A, Wotman M, MacConaill LE, Jones SM, Pfaff KL, Rodig SJ, Eacker S, Malig M, Reister E, Piccioni D, Kesari S, Sehgal K, Haddad RI, Cohen E, Posner MR, Deichaite I, Hanna GJ. J Transl Med. 2024 Oct 22;22(1):960. doi: 10.1186/s12967-024-05761-z. PMID: 39438862



Mesenchymal Stromal Cell Implants for Chronic Motor Deficits After Traumatic Brain Injury: Post Hoc Analysis of a Randomized Trial.

<https://pubmed.ncbi.nlm.nih.gov/39231380/>

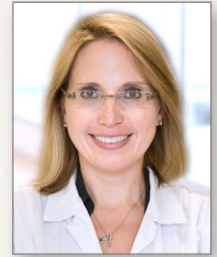
Okonkwo DO, McAllister P, Achrol AS, Karasawa Y, Kawabori M, Cramer SC, Lai A, Kesari S, Frishberg BM, Groysman LI, Kim AS, Schwartz NE, Chen JW, Imai H, Yasuhara T, Chida D, Nejadnik B, Bates D, Stonehouse AH, Richardson RM, Steinberg GK, Poggio EC, Weintraub AH. Neurology. 2024 Oct 8;103(7):e209797. doi: 10.1212/WNL.0000000000209797. Epub 2024 Sep 4. PMID: 39231380

Neoadjuvant clinical trials in adults with newly diagnosed high-grade glioma: A systematic review.

<https://pubmed.ncbi.nlm.nih.gov/39675399/>

Juarez TM, Gill JM, Minev BR, Sharma A, Kesari S. Crit Rev Oncol Hematol. 2024 Dec 13;206:104596. doi: 10.1016/j.critrevonc.2024.104596. PMID: 39675399

Jennifer Linehan, MD



Cell-free and extracellular vesicle microRNAs with clinical utility for solid tumors

<https://pubmed.ncbi.nlm.nih.gov/39129372/>

Hayashi Y, Millen J-C, Ramos RI, Linehan JA, Wilson TG, Hoon DSB, and Bustos MA.
Mol Oncol. 2024 Aug 11. DOI: 10.1002/1878-0261.13709.

Corrigendum to “Route of Administration for UGN-101 and Impact on Oncological and Safety Outcomes” [Eur. Urol. Focus (2023)].

<https://pubmed.ncbi.nlm.nih.gov/37640582/>

Linehan J, Gottlieb J, Woldu SL, Labbate C, Rose K, Sexton W, Kaimakliotis H, Jacob J, Dickstein R, Nieder A, Bjurlin M, Humphreys M, Ghodoussipour S, Quek M, O'Donnell M, Eisner BH, Feldman AS, Matin SF, Lotan Y, Murray KS.
Eur Urol Focus. 2024 Jan;10(1):211. doi: 10.1016/j.euf.2023.08.006. Epub 2023 Aug 26. PMID: 37640582

Diagnostic miRNA Signatures in Paired Tumor, Plasma, and Urine from Renal Cell Carcinoma Patients

<https://pubmed.ncbi.nlm.nih.gov/37791385/>

Bustos MA, Gottlieb J, Choe J, Suyeon R, Lin S, Allen WM, Krasne DL, Wilson TG, Hoon DSB, Linehan JA.
Clinical Chemistry 2024 Oct 4:hvad133. DOI: 10.1093/clinchem/hvad133.

First analysis of the safety and efficacy of UGN-101 in the treatment of ureteral tumors.

<https://pubmed.ncbi.nlm.nih.gov/37517898/>

Jacob JM, Woldu SL, Linehan J, Labbate C, Rose KM, Sexton WJ, Tachibana I, Kaimakliotis H, Nieder A, Bjurlin MA, Humphreys M, Ghodoussipour SB, Quek ML, Johnson B, O'Donnell M, Eisner BH, Feldman AS, Murray KS, Matin SF, Lotan Y, Dickstein RJ.
Urol Oncol. 2024 Jan;42(1):20.e17-20.e23. doi: 10.1016/j.urolonc.2023.07.004. Epub 2023 Jul 28. PMID: 37517898

Impact of intra-tumoral immunity on predicting response and survival after neoadjuvant cisplatin-based chemotherapy in patients with muscle invasive bladder cancer.

<https://pubmed.ncbi.nlm.nih.gov/39119802/>

Mendoza-Valderrey A, Choe J, Kessler DM, Jimenez G, Li X, Kolker S, Allen W, Linehan JA, Twardowski PW, Ascierto ML.
Cancer Med. 2024 Aug;13(15):e70088. doi: 10.1002/cam4.70088. PMID: 39119802

PD41-07 Assessment Of The Diagnostic Accuracy Of Oncuria-Detect® For Detection Of Upper Tract Urothelial Carcinoma

https://journals.lww.com/auajuro/fulltext/2024/05001/pd41_07_assessment_of_the_diagnostic_accuracy_of.1820.aspx

Sakatani, Toru; Fujita, Kazutoshi; Linehan, Jennifer; Murakami, Kaoru; Lee, Riko; Pagano, Ian; Rosser, Charles; Furuya, Hideki
The Journal of Urology 211(5S):p e888, May 2024. | DOI: 10.1097/01.JU.0001008568.76803.f1.07

PD41-11 Longitudinal Follow Up Of Multicenter Study Of Ugn-101 For Upper Tract Urothelial Cancer

https://journals.lww.com/auajuro/fulltext/2024/05001/pd41_11_longitudinal_follow_up_of_multicenter.1824.aspx

Woldu, Solomon L.; Johnson, Brett; Murray, Katie S.; Miyagi, Hiroko; Sexton, Wade; Tachibana, Isamu; Kaimakliotis, Hristos; Jacob, Joseph; Dickstein, Rian; Linehan, Jennifer; Nieder, Alan; Bjurlin, Marc; Heidenberg, Daniel; Humphreys, Mitchell; Ghodoussipour, Saum; Quek, Marcus L.; O'Donnell, Michael; Eisner, Brian; Matin, Surena; Feldman, Adam S.; Lotan, Yair
The Journal of Urology 211(5S):p e890, May 2024. | DOI: 10.1097/01.JU.0001008568.76803.f1.11

Kim Margolin, MD, FACP, FASCO



Combined Regional Approach of Talimogene laherparepvec and Radiotherapy in the Treatment of Advanced Melanoma.

<https://pubmed.ncbi.nlm.nih.gov/38893072/>

Tam A, Ladbury C, Kassardjian A, Modi B, McGee H, Melstrom L, Margolin K, Xing Y, Amini A.
Cancers (Basel). 2024 May 21;16(11):1951. doi: 10.3390/cancers16111951. PMID: 38893072

Evaluating the Safety of Immune Checkpoint Inhibitors and Combination Therapies in the Management of Brain Metastases: A Comprehensive Review.

<https://pubmed.ncbi.nlm.nih.gov/39682118/>

Podder V, Ranjan T, Margolin K, Maharaj A, Ahluwalia MS.
Cancers (Basel). 2024 Nov 23;16(23):3929. doi: 10.3390/cancers16233929. PMID: 39682118

Immune Checkpoint Inhibitors in the Management of Brain Metastases from Non-Small Cell Lung Cancer: A Comprehensive Review of Current Trials, Guidelines and Future Directions.

<https://pubmed.ncbi.nlm.nih.gov/39410008/>

Ranjan T, Podder V, Margolin K, Velcheti V, Maharaj A, Ahluwalia MS.
Cancers (Basel). 2024 Oct 3;16(19):3388. doi: 10.3390/cancers16193388. PMID: 39410008

Immunogenomics and spatial proteomic mapping highlight distinct neuro-immune architectures in melanoma vs. non-melanoma-derived brain metastasis.

<https://pubmed.ncbi.nlm.nih.gov/39516255/>

Mendoza-Valderrey A, Dettmann E, Hanes D, Kessler DM, Danilova L, Rau K, Quan Y, Stern S, Barkhoudarian G, Bifulco C, Margolin K, Kolker S, Ascierto ML.
BJC Rep. 2024 May 2;2(1):38. doi: 10.1038/s44276-024-00060-y. PMID: 39516255

The Dance Between Tumor Molecular Biology and Antitumor Immune Response.

<https://pubmed.ncbi.nlm.nih.gov/37988415/>

Margolin KA.
Clin Cancer Res. 2024 Jan 17;30(2):257-259. doi: 10.1158/1078-0432.CCR-23-2642. PMID: 37988415

Immunotherapeutic and Targeted Strategies for Managing Brain Metastases from Common Cancer Origins: A State-of-the-Art Review.

<https://pubmed.ncbi.nlm.nih.gov/39514054/>

Podder V, Bellur S, Margolin K, Advani P, Mahtani RL, Subbiah V, Novo GB, Ranjan T, Ahluwalia MS.
Curr Oncol Rep. 2024 Dec;26(12):1612-1638. doi: 10.1007/s11912-024-01593-8. Epub 2024 Nov 8. PMID: 39514054

Using Indirect Comparisons of Prospective, Randomized Trials to Make Therapeutic Decisions in Melanoma: Cross-Trial Comparisons as Surrogates for Proper Head-To-Head Studies?

<https://pubmed.ncbi.nlm.nih.gov/39374466/>

Margolin KA.J
Clin Oncol. 2024 Nov 20;42(33):3891-3894. doi: 10.1200/JCO-24-01634. Epub 2024 Oct 7. PMID: 39374466

David A Merrill, MD

Beyond the hippocampus: Amygdala and memory functioning in older adults.

<https://pubmed.ncbi.nlm.nih.gov/38871129/>

Bookheimer TH, Ganapathi AS, Iqbal F, Popa ES, Mattinson J, Bramen JE, Bookheimer SY, Porter VR, Kim M, Glatt RM, Bookheimer AW, Merrill DA, Panos SE, Siddarth P.
Behav Brain Res. 2024 Aug 5;471:115112. doi: 10.1016/j.bbr.2024.115112. Epub 2024 Jun 12. PMID: 38871129



Data leakage in deep learning studies of translational EEG.

<https://pubmed.ncbi.nlm.nih.gov/38765672/>

Brookshire G, Kasper J, Blauch NM, Wu YC, Glatt R, Merrill DA, Gerrol S, Yoder KJ, Quirk C, Lucero C.
Front Neurosci. 2024 May 3;18:1373515. doi: 10.3389/fnins.2024.1373515. eCollection 2024. PMID: 38765672

Diagnostic utility of brain MRI volumetry in comparing traumatic brain injury, Alzheimer disease and behavioral variant frontotemporal dementia

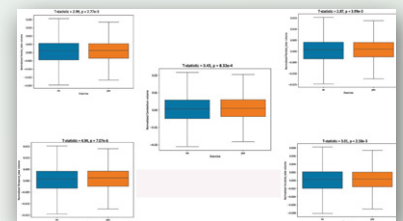
<https://pubmed.ncbi.nlm.nih.gov/39261753/>

Cyrus A Raji, Somayeh Meysami, Verna R Porter, David A Merrill, Mario F Mendez.
BMC Neurol. 2024 Sep 11;24(1):337. doi: 10.1186/s12883-024-03844-4.

Exercise-Related Physical Activity Relates to Brain Volumes in 10,125 Individuals.

<https://pubmed.ncbi.nlm.nih.gov/38073389/>

Raji CA, Meysami S, Hashemi S, Garg S, Akbari N, Ahmed G, Chodakiewitz YG, Nguyen TD, Niotis K, Merrill DA, Attariwala R.
J Alzheimers Dis. 2024;97(2):829-839. doi: 10.3233/JAD-230740. PMID: 38073389



Lifestyle intervention improves cognition and quality of life in persons with early Multiple Sclerosis.

<https://pubmed.ncbi.nlm.nih.gov/39332126/>

Giesser BS, Rapozo M, Glatt R, Patis C, Panos S, Merrill DA, Siddarth P.
Mult Scler Relat Disord. 2024 Nov;91:105897. doi: 10.1016/j.msard.2024.105897. Epub 2024 Sep 18. PMID: 39332126

Neurocognitive Effects of an Online Brain Health Program and Weekly Telehealth Support Group in Older Adults with Subjective Memory Loss: A Pilot Study.

<https://pubmed.ncbi.nlm.nih.gov/38525754/>

Glatt RM, Amos A, Merrill DA, Hodes JF, Wong CL, Miller KJ, Siddarth P.
Geriatrics (Basel). 2024 Mar 14;9(2):37. doi: 10.3390/geriatrics9020037. PMID: 38525754

The “FitBrain” program: implementing exergaming & dual-task exercise programs in outpatient clinical settings.

<https://pubmed.ncbi.nlm.nih.gov/39712081/>

Glatt RM, Patis C, Miller KJ, Merrill DA, Stubbs B, Adcock M, Giannouli E, Siddarth P.
Front Sports Act Living. 2024 Dec 6;6:1449699. doi: 10.3389/fspor.2024.1449699. eCollection 2024. PMID: 39712081

The impact of physical exercise on hippocampal atrophy in mild cognitive impairment and Alzheimer’s disease: a meta-analysis.

<https://pubmed.ncbi.nlm.nih.gov/38606637/>

Kress GT, Popa ES, Merrill DA, Bramen JE, Siddarth P.
Neuroreport. 2024 May 15;35(8):529-535. doi: 10.1097/WNR.0000000000002037. Epub 2024 Apr 12. PMID: 38606637

Visceral and Subcutaneous Abdominal Fat Predict Brain Volume Loss at Midlife in 10,001 Individuals.

<https://pubmed.ncbi.nlm.nih.gov/37728587/>

Raji CA, Meysami S, Hashemi S, Garg S, Akbari N, Gouda A, Chodakiewitz YG, Nguyen TD, Niotis K, Merrill DA, Attariwala R.
Aging Dis. 2024 Aug 1;15(4):1831-1842. doi: 10.14336/AD.2023.0820. PMID: 37728587

Somayeh Meysami, MD

Diagnostic utility of brain MRI volumetry in comparing traumatic brain injury, Alzheimer disease and behavioral variant frontotemporal dementia

<https://pubmed.ncbi.nlm.nih.gov/39261753/>

Cyrus A Raji, Somayeh Meysami, Verna R Porter, David A Merrill, Mario F Mendez.
BMC Neurol, 2024 Sep 11;24(1):337. doi: 10.1186/s12883-024-03844-4.

Exercise-Related Physical Activity Relates to Brain Volumes in 10,125 Individuals.

<https://pubmed.ncbi.nlm.nih.gov/38073389/>

Raji CA, Meysami S, Hashemi S, Garg S, Akbari N, Ahmed G, Chodakiewitz YG, Nguyen TD, Niotis K, Merrill DA, Attariwala R.
J Alzheimers Dis. 2024;97(2):829-839. doi: 10.3233/JAD-230740. PMID: 38073389

Visceral and Subcutaneous Abdominal Fat Predict Brain Volume Loss at Midlife in 10,001 Individuals.

<https://pubmed.ncbi.nlm.nih.gov/37728587/>

Raji CA, Meysami S, Hashemi S, Garg S, Akbari N, Gouda A, Chodakiewitz YG, Nguyen TD, Niotis K, Merrill DA, Attariwala R.
Aging Dis. 2024 Aug 1;15(4):1831-1842. doi: 10.14336/AD.2023.0820. PMID: 37728587



Diana Pearre, MD

Cisplatin induces BDNF downregulation in middle-aged female rat model while BDNF enhancement attenuates cisplatin neurotoxicity.

<https://pubmed.ncbi.nlm.nih.gov/38336286/>

Lomeli N, Pearre DC, Cruz M, Di K, Ricks-Oddie JL, Bota DA.
Exp Neurol. 2024 May;375:114717. doi: 10.1016/j.expneurol.2024.114717. Epub 2024 Feb 8. PMID: 38336286

N-acetylcysteine prevents cisplatin-induced cognitive impairments in an ovarian cancer rat model.

<https://pubmed.ncbi.nlm.nih.gov/39706252/>

Lomeli N, Pearre DC, Lepe J, Argueta DA, Arellano MA, Ricks-Oddie JL, Gupta K, Bota DA.
Cancer Lett. 2024 Dec 19;611:217405. doi: 10.1016/j.canlet.2024.217405. PMID: 39706252



Verna Porter, MD

Beyond the hippocampus: amygdala and memory functioning in older adults

<https://pubmed.ncbi.nlm.nih.gov/38871129/>

Bookheimer TH, Ganapathi AS, Iqbal F, Mattinson JM, Popa ES, Bramen JE, Bookheimer SY, Porter VR, Kim M, Glatt RM, Bookheimer A, Merrill DA, Panos SE, Siddarth, P.
Behav Brain Res. 2024 Aug 5:471:115112. doi: 10.1016/j.bbr.2024.115112. Epub 2024 Jun 12.



Diagnostic utility of brain MRI volumetry in comparing traumatic brain injury, Alzheimer disease and behavioral variant frontotemporal dementia

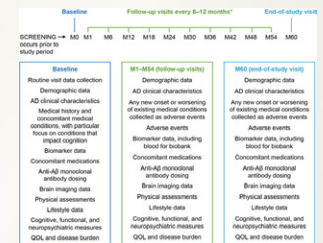
<https://pubmed.ncbi.nlm.nih.gov/39261753/>

Cyrus A Raji, Somayeh Meysami, Verna R Porter, David A Merrill, Mario F Mendez.
BMC Neurol, 2024 Sep 11;24(1):337. doi: 10.1186/s12883-024-03844-4.

Generating real-world evidence in Alzheimer's disease: considerations for establishing a core dataset

<https://pubmed.ncbi.nlm.nih.gov/38706421/>

Jeffrey Cummings, James E. Galvin, Mihaela Levitchi Benea, Carl de Moor, Ricardo F. Allegri, Alireza Atri, Howard Chertkow, Claire Paquet, Verna R. Porter, Craig W. Ritchie, Sietske A.M. Sikkes, Michael R. Smith, Elizabeth Fisher, Christina Marsica Grassi, Ivana Rubino.
Alzheimer's & Dementia: The Journal of the Alzheimer's Association; Alzheimer's Dement. 2024;1-11. DOI: 10.1002/alz.13785



Akanksha Sharma, MD

A Microfluidic, Multi-Antibody Cell Capture Method to Evaluate Tumor Cells in Cerebrospinal Fluid in Patients With Suspected Leptomeningeal Metastases.

Sweed NT, Hsiao HC, Blouw B, Pircher TJ, Fisher D, Naluz KR, Mayer JA, Dugan MC, Sharma A, Carrillo J, Kesari S.
Arch Pathol Lab Med. 2024 May 27. doi: 10.5858/arpa.2023-0295-OA. PMID: 38797516.



A Survey of 251 Facial Paralysis Patients to Assess Their Educational Preparedness and Symptom Management after Treatment of Vestibular Schwannoma

<https://www.researchgate.net/publication/386879995>

Garni Barkhoudarian, Walavan Sivakumar, Courtney J. Voelker, Shanthi Gowrinathan, Akanksha Sharma, Hsin-Fang Li, Amit Kochhar
Journal of Neurological Surgery Part B Skull Base. December 2024. DOI:10.1055/a-2446-9674

Neoadjuvant clinical trials in adults with newly diagnosed high-grade glioma: A systematic review.

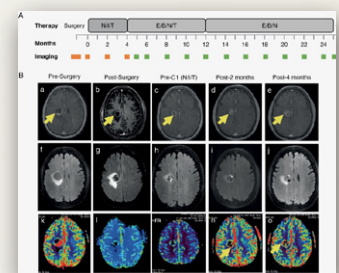
<https://pubmed.ncbi.nlm.nih.gov/39675399/>

Juarez TM, Gill JM, Minev BR, Sharma A, Kesari S.
Crit Rev Oncol Hematol. 2024 Dec 13;206:104596. doi: 10.1016/j.critrevonc.2024.104596. PMID: 39675399

Neoadjuvant combination treatment with checkpoint inhibitors, chemotherapy, and BRAF/MEK inhibitors for BRAFV600E glioblastoma results in sustained response: A case report.

<https://pubmed.ncbi.nlm.nih.gov/39036436/>

Wagle N, Sharma A, Nguyen M, Truong J, Juarez TM, Kesari S.
Neurooncol Adv. 2024 Jul 2;6(1):vdae110. doi: 10.1093/noonj/vdae110. eCollection 2024 Jan-Dec. PMID: 39036436



Parkinson's Disease Diagnosis Using miRNA Biomarkers and Deep Learning.

<https://pubmed.ncbi.nlm.nih.gov/38287819/>

Kumar A, Kouznetsova VL, Kesari S, Tsigelny IF.
Front Biosci (Landmark Ed). 2024 Jan 12;29(1):4. doi: 10.31083/j.fbl2901004. PMID: 38287819

Pilot Study of High-Dose Pemetrexed in Patients with Progressive Chordoma

<https://pubmed.ncbi.nlm.nih.gov/38047868/>

S Kesari, N Wagle, JA Carrillo, A Sharma, M Nguyen, J Truong, JM Gill, R Nersesian, N Nomura, E Rahbarlayegh, G Barkhoudarian, W Sivakumar, DF Kelly, H Krauss, MA Bustos, D Hoon, L Anker, A Singh, K Sankhala, TM Juarez
Clin Cancer Res. 2023 Dec 4:OF1-OF11. doi: 10.1158/1078-0432.CCR-23-2317. PMID: 38047868

Top Ten Tips Palliative Care Clinicians Should Know About Caring for People with Leptomenigeal Disease.

<https://pubmed.ncbi.nlm.nih.gov/39315927/>

Hawkins A, Khawand-Azoulai M, Tanenbaum R, Oltmann C, Benjamin C, Diwanji T, Guillermo Prieto Eibl MDP, Siegel C, Sharma A.

J Palliat Med. 2024 Sep 24. doi: 10.1089/jpm.2024.0291. Online ahead of print. PMID: 39315927

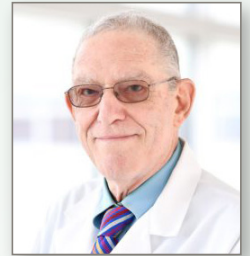
Frederick Singer, MD

Pilot study of plasma miRNA signature panel for differentiating single vs multiglandular parathyroid disease.

<https://pubmed.ncbi.nlm.nih.gov/39163258/>

Goldfarb M, Bustos MA, Moon J, Jackson K, Singer FR, Hoon DSB.

J Clin Endocrinol Metab. 2024 Aug 20;dgae577. doi: 10.1210/clinem/dgae577. PMID: 39163258



Walavan Sivakumar, MD

A phase I dose-escalation study of pulsatile afatinib in patients with recurrent or progressive brain cancer.

<https://pubmed.ncbi.nlm.nih.gov/38680990/>

Juarez TM, Gill JM, Heng A, Carrillo JA, Wagle N, Nomura N, Nguyen M, Truong J, Dobrawa L, Sivakumar W, Barkhoudarian G, Kelly DF, Kesari S.

Neurooncol Adv. 2024 Mar 30;6(1):vdae049. doi: 10.1093/oaajnl/vdae049. eCollection 2024 Jan-Dec.

PMID: 38680990



A Reliable Closure Technique for Retromastoid Craniotomy to Avoid Cerebrospinal Fluid Leaks and Meningitis.

https://journals.lww.com/neurosurgpraonline/fulltext/2024/09000/a_reliable_closure_technique_for_retromastoid.5.aspx

Garni Barkhoudarian, R. Justin Garling, Regin Jay Mallari, Walavan Sivakumar, Daniel F Kelly

Neurosurgery Practice 5(3):e00086, September 2024. | DOI: 10.1227/neuprac.0000000000000086

A Survey of 251 Facial Paralysis Patients to Assess Their Educational Preparedness and Symptom Management after Treatment of Vestibular Schwannoma

<https://www.researchgate.net/publication/386879995> A Survey of 251 Facial Paralysis Patients to Assess Their Educational Preparedness and Symptom Management after Treatment of Vestibular Schwannoma

Garni Barkhoudarian, Walavan Sivakumar, Courtney J. Voelker, Shanthi Gowrinathan, Akanksha Sharma, Hsin-Fang Li, Amit Kochhar

Journal of Neurological Surgery Part B Skull Base. December 2024. DOI:10.1055/a-2446-9674

Adjunctive Middle Meningeal Artery Embolization for Subdural Hematoma.

<https://pubmed.ncbi.nlm.nih.gov/39565988/>

Davies JM, Knopman J, Mokin M, Hassan AE, Harbaugh RE, Khalessi A, Fiehler J, Gross BA, Grandhi R, Tarpley J, Sivakumar W, Bain M, Crowley RW, Link TW, Fraser JF, Levitt MR, Chen PR, Hanel RA, Bernard JD, Jumaa M, Youssef P, Cress MC, Chaudry MI, Shakir HJ, Lesley WS, Billingsley J, Jones J, Koch MJ, Paul AR, Mack WJ, Osburn JW, Dlouhy K, Grossberg JA, Kellner CP, Sahlein DH, Santarelli J, Schirmer CM, Singer J, Liu JJ, Majhoo AQ, Wolfe T, Patel NV, Roark C, Siddiqui AH; EMBOLISE Investigators.

N Engl J Med. 2024 Nov 21;391(20):1890-1900. doi: 10.1056/NEJMoa2313472. PMID: 39565988

Pilot Study of High-Dose Pemetrexed in Patients with Progressive Chordoma.

<https://pubmed.ncbi.nlm.nih.gov/38047868/>

Kesari S, Wagle N, Carrillo JA, Sharma A, Nguyen M, Truong J, Gill JM, Nersesian R, Nomura N, Rahbarlayegh E, Barkhoudarian G, Sivakumar W, Kelly DF, Krauss H, Bustos MA, Hoon DSB, Anker L, Singh AS, Sankhala KK, Juarez TM.

Clin Cancer Res. 2024 Jan 17;30(2):323-333. doi: 10.1158/1078-0432.CCR-23-2317. PMID: 38047868

The neurosurgery research & education foundation-young neurosurgeons committee webinar series: Providing education and inspiration during the COVID-19 pandemic.

<https://pubmed.ncbi.nlm.nih.gov/38295463/>

Rodriguez-Armendariz AG, Saint-Germain MA, Khalafallah AM, Huq S, Almeida ND, Dornbos DL 3rd, Graffeo CS, Sivakumar W, Mukherjee D, Johnson JN.

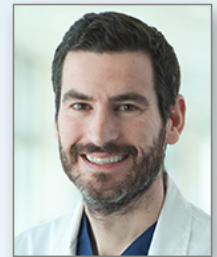
J Clin Neurosci. 2024 Feb;120:221-228. doi: 10.1016/j.jocn.2024.01.021. Epub 2024 Jan 30. PMID: 38295463

Jason Tarpley, MD

Adjunctive Middle Meningeal Artery Embolization for Subdural Hematoma.

<https://pubmed.ncbi.nlm.nih.gov/39565988/>

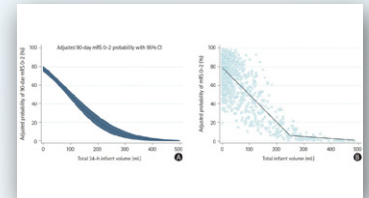
Davies JM, Knopman J, Mokin M, Hassan AE, Harbaugh RE, Khalessi A, Fiehler J, Gross BA, Grandhi R, Tarpley J, Sivakumar W, Bain M, Crowley RW, Link TW, Fraser JF, Levitt MR, Chen PR, Hanel RA, Bernard JD, Jumaa M, Youssef P, Cress MC, Chaudry MI, Shakir HJ, Lesley WS, Billingsley J, Jones J, Koch MJ, Paul AR, Mack WJ, Osbun JW, Dlouhy K, Grossberg JA, Kellner CP, Sahlein DH, Santarelli J, Schirmer CM, Singer J, Liu JJ, Majjhoo AQ, Wolfe T, Patel NV, Roark C, Siddiqui AH; EMBOLISE Investigators. N Engl J Med. 2024 Nov 21;391(20):1890-1900. doi: 10.1056/NEJMoa2313472. PMID: 39565988.



How Do Quantitative Tissue Imaging Outcomes in Acute Ischemic Stroke Relate to Clinical Outcomes?

<https://pubmed.ncbi.nlm.nih.gov/38836272/>

Ospel JM, Rinkel L, Ganesh A, Demchuk A, Heran M, Sauvageau E, Joshi M, Haussen D, Jayaraman M, Coutts S, Yu A, Puetz V, Iancu D, Bang OY, Tarpley J, Holmin S, Kelly M, Tymianski M, Hill M, Goyal M; ESCAPE-NA1 Investigators. J Stroke. 2024 May;26(2):252-259. doi: 10.5853/jos.2023.02180. Epub 2024 May 30. PMID: 38836272.



Infarct Evolution on MR-DWI After Thrombectomy in Acute Stroke Patients Randomized to Nerinetide or Placebo: The REPERFUSE-NA1 Study.

<https://pubmed.ncbi.nlm.nih.gov/38165335/>

Fladt J, Guo J, Specht JL, Wang M, Chan LL, Mctaggart R, Buck BH, Aviv R, Swartz RH, Field TS, Tarpley J, Shah R, Goyal M, Tymianski M, Hill MD, Demchuk A, d'Esterre C, Barber P. Neurology. 2024 Jan 23;102(2):e207976. doi: 10.1212/WNL.0000000000207976. Epub 2023 Dec 22. PMID: 38165335.

Thrombectomy for Stroke With Large Infarct on Noncontrast CT: The TESLA Randomized Clinical Trial.

<https://pubmed.ncbi.nlm.nih.gov/39374319/>

Writing Committee for the TESLA Investigators; Yoo AJ, Zaidat OO, Sheth SA, Rai AT, Ortega-Gutierrez S, Given CA 2nd, Zaidi SF, Grandhi R, Cuellar H, Mokin M, Katz JM, Alshekhlee A, Taqi MA, Ansari SA, Siddiqui AH, Barazangi N, English JD, Maud A, Kirmani J, Gupta R, Yavagal DR, Tarpley J, Pandya DJ, Cress MC, Dharmadhikari S, Asif KS, Kass-Hout T, Puri AS, Janjua N, Majjhoo AQ, Badruddin A, Edgell RC, Khatri R, Morgan L, Razak A, Zha A, Khandelwal P, Mueller-Kronast N, Rivet DJ, Wolfe T, Snelling B, Sultan-Qurraie A, Lin SP, Khangura R, Spiotta AM, Bhuva P, Salazar-Marioni S, Lin E, Tarabishy AR, Samaniego EA, Kolikonda MK, Jumaa MA, Reddy VK, Sharma P, Berkhemer OA, van Doormaal PJ, van Es ACGM, van Zwam WH, Emmer BJ, Beenen LF, Majoie CBLM, Buderer N, Detry MA, Bosse A, Graves TL, Saunders C, Elijovich L, Jadhav A, Patterson M, Slight H, Below K, Al Kasab S; TESLA Investigators. JAMA. 2024 Sep 23;332(16):1355-66. doi: 10.1001/jama.2024.13933. PMID: 39374319

Thrombectomy With the pRESET vs Solitaire Stent Retrievers as First-Line Large Vessel Occlusion Stroke Treatment: A Randomized Clinical Trial.

<https://pubmed.ncbi.nlm.nih.gov/38165690/>

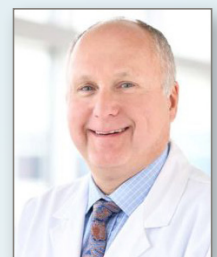
Nogueira RG, Lobsien D, Klisch J, Pielenz D, Lobsien E, Sauvageau E, Aghaebrahim N, Möhlenbruch M, Vollherbst D, Ulfert C, Bozorgchami H, Clark W, Priest R, Samaniego EA, Ortega-Gutierrez S, Ghannam M, Lopes D, Billingsley J, Keigher K, Haussen DC, Al-Bayati AR, Siddiqui A, Levy E, Chen M, Munich S, Schramm P, Boppel T, Narayanan S, Gross BA, Roth C, Boeckh-Behrens T, Hassan A, Fifi J, Budzik RF, Tarpley J, Starke RM, Raz E, Brogan G, Liebeskind DS, Hanel RA. JAMA Neurol. 2024 Feb 1;81(2):170-178. doi: 10.1001/jamaneurol.2023.5010. PMID: 38165690.

Przemyslaw Twardowski, MD

Bone Biomarkers and Subsequent Survival in Men with Hormone-sensitive Prostate Cancer: Results from the SWOG S1216 Phase 3 Trial of Androgen Deprivation Therapy with or Without Orteronel.

<https://pubmed.ncbi.nlm.nih.gov/37085425/>

Lara PN Jr, Mayerson E, Gertz E, Tangen C, Goldkorn A, van Loan M, Hussain M, Gupta S, Zhang J, Parikh M, Twardowski P, Quinn DI, LeBlanc M, Vogelzang NJ, Thompson I, Agarwal N. Eur Urol. 2024 Feb;85(2):171-176. doi: 10.1016/j.eururo.2023.03.036. Epub 2023 Apr 19. PMID: 37085425



Germline and somatic testing for homologous repair deficiency in patients with prostate cancer (part 1 of 2).

<https://pubmed.ncbi.nlm.nih.gov/39354185/>

Armstrong AJ, Taylor A, Haffner MC, Abida W, Bryce AH, Karsh LI, Tagawa ST, Twardowski P, Serritella AV, Lang JM. Prostate Cancer Prostatic Dis. 2024 Oct 1. doi: 10.1038/s41391-024-00901-4. PMID: 39354185

Impact of intra-tumoral immunity on predicting response and survival after neoadjuvant cisplatin-based chemotherapy in patients with muscle invasive bladder cancer.

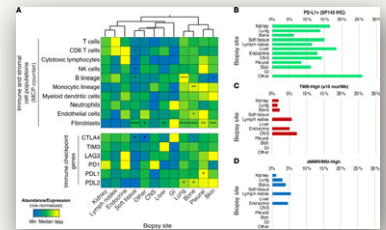
<https://pubmed.ncbi.nlm.nih.gov/39119802/>

Mendoza-Valderrey A, Choe J, Kessler DM, Jimenez G, Li X, Kolker S, Allen W, Linehan JA, Twardowski PW, Ascierto ML. Cancer Med. 2024 Aug;13(15):e70088. doi: 10.1002/cam4.70088. PMID: 39119802

Markers of bone metabolism and overall survival in men with bone-metastatic hormone sensitive prostate cancer (HSPC): A subset analysis of SWOG S1216, a phase III trial of androgen deprivation with or without orteronel.

<https://pubmed.ncbi.nlm.nih.gov/38424319/>

Lara PN Jr, Mayerson E, Gertz E, Tangen C, Goldkorn A, van Loan M, Hussain M, Gupta S, Zhang J, Parikh M, Twardowski P, Quinn DI, LeBlanc M, Thompson I, Agarwal N. Prostate Cancer Prostatic Dis. 2024 Sep;27(3):566-570. doi: 10.1038/s41391-024-00813-3. Epub 2024 Feb 29. PMID: 38424319



Molecular analysis of primary and metastatic sites in patients with renal cell carcinoma.

<https://pubmed.ncbi.nlm.nih.gov/39007269/>

Gulati S, Barata PC, Elliott A, Bilen MA, Burgess EF, Choueiri TK, Darabi S, Dawson NA, Gartrell BA, Hammers HJ, Heath EI, Magee D, Rao A, Ryan CJ, Twardowski P, Wei S, Brugarolas J, Zhang T, Zibelman MR, Nabhan C, McKay RR. J Clin Invest. 2024 May 30;134(14):e176230. doi: 10.1172/JCI176230. PMID: 39007269

Reduction of myeloid-derived suppressor cells in prostate cancer murine models and patients following white button mushroom treatment.

<https://pubmed.ncbi.nlm.nih.gov/39390760/>

Wang X, Ma S, Twardowski P, Lau C, Chan YS, Wong K, Xiao S, Wang J, Wu X, Frankel P, Wilson TG, Synold TW, Presant C, Dorff T, Yu J, Sadava D, Chen S. Clin Transl Med. 2024 Oct;14(10):e70048. doi: 10.1002/ctm2.70048. PMID: 39390760

Therapeutic implications of homologous recombination deficiency testing in patients with prostate cancer (Part 2 of 2).

<https://pubmed.ncbi.nlm.nih.gov/39333696/>

Serritella AV, Taylor A, Haffner MC, Abida W, Bryce A, Karsh LI, Tagawa ST, Twardowski P, Armstrong AJ, Lang JM. Prostate Cancer Prostatic Dis. 2024 Sep 27. doi: 10.1038/s41391-024-00887-z. PMID: 39333696

Naveed Wagle, MD

A phase I dose-escalation study of pulsatile afatinib in patients with recurrent or progressive brain cancer.

<https://pubmed.ncbi.nlm.nih.gov/38680990/>

Juarez TM, Gill JM, Heng A, Carrillo JA, Wagle N, Nomura N, Nguyen M, Truong J, Dobrawa L, Sivakumar W, Barkhoudarian G, Kelly DF, Kesari S. Neurooncol Adv. 2024 Mar 30;6(1):vdae049. doi: 10.1093/noajnl/vdae049. eCollection 2024 Jan-Dec. PMID: 38680990



BETA prime: a first-in-man phase 1 study of AdAPT-001, an armed oncolytic adenovirus for solid tumors.

<https://pubmed.ncbi.nlm.nih.gov/38146006/>

Conley AP, Roland CL, Bessudo A, Gastman BR, Villafior VM, Larson C, Reid TR, Caroen S, Oronsky B, Stirn M, Williams J, Burbano E, Coyle A, Barve MA, Wagle N, Abrouk N, Kesari S. Cancer Gene Ther. 2024 Apr;31(4):517-526. doi: 10.1038/s41417-023-00720-0. Epub 2023 Dec 25. PMID: 38146006

Imaging as an early biomarker to predict sensitivity to everolimus for progressive NF2-related vestibular schwannoma.

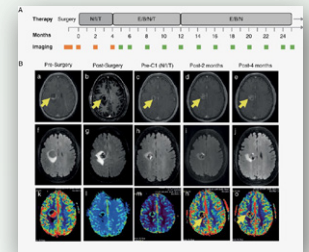
<https://pubmed.ncbi.nlm.nih.gov/38372904/>

Nghiempfu PL, Vitte J, Dombi E, Nguyen T, Wagle N, Ishiyama A, Sepahdari AR, Cachia D, Widemann BC, Brackmann DE, Doherty JK, Kalamarides M, Giovannini M. J Neurooncol. 2024 Apr;167(2):339-348. doi: 10.1007/s11060-024-04596-4. Epub 2024 Feb 19. PMID: 38372904

Neoadjuvant combination treatment with checkpoint inhibitors, chemotherapy, and BRAF/MEK inhibitors for BRAFV600E glioblastoma results in sustained response: A case report.

<https://pubmed.ncbi.nlm.nih.gov/39036436/>

Wagle N, Sharma A, Nguyen M, Truong J, Juarez TM, Kesari S.
Neurooncol Adv. 2024 Jul 2;6(1):vdae110. doi: 10.1093/noajnl/vdae110. eCollection 2024 Jan-Dec. PMID: 39036436



Pilot Study of High-Dose Pemetrexed in Patients with Progressive Chordoma

<https://pubmed.ncbi.nlm.nih.gov/38047868/>

Kesari S, Wagle N, Carrillo JA, Sharma A, Nguyen M, Truong J, Gill JM, Nersesian R, Nomura N, Rahbarlayegh E, Barkhoudarian G, Sivakumar W, Kelly DF, Krauss HR, Bustos MA, Hoon DSB, Anker L, Singh AS, and Sankhala KK, Tiffany M Juarez.
Clinical Cancer Research 2023 Dec 4:OF1-OF11. DOI: 10.1158/1078-0432.CCR-23-2317.

Pre-radiation Nivolumab plus ipilimumab in patients with newly diagnosed high-grade gliomas.

<https://pubmed.ncbi.nlm.nih.gov/39572979/>

Kesari S, Wojcinski A, Pabla S, Seager RJ, Gill JM, Carrillo JA, Wagle N, Park DJ, Nguyen M, Truong J, Takasumi Y, Chaiken L, Chang SC, Barkhoudarian G, Kelly DF, Juarez TM.
Oncoimmunology. 2024 Dec 31;13(1):2432728. doi: 10.1080/2162402X.2024.2432728. Epub 2024 Nov 21. PMID: 39572979

Evan Walgama, MD [2024]

Cost-effectiveness Analysis of Inferior Turbinate Reduction and Immunotherapy in Allergic Rhinitis

<https://pubmed.ncbi.nlm.nih.gov/37642388/>

Yong M, Aravinthan K, Kirubalingam K, Thamboo A, Hwang PH, Nadeau K, Walgama E.
Laryngoscope. 2024 Apr;134(4):1572-1580. doi: 10.1002/lary.31003. Epub 2023 Aug 29.

In Response to Cost-effectiveness Analysis of Inferior Turbinate Reduction and Immunotherapy in Allergic Rhinitis

<https://pubmed.ncbi.nlm.nih.gov/38153190/>

Yong M, Aravinthan K, Kirubalingam K, Thamboo A, Hwang PH, Nadeau K, Walgama E.
Laryngoscope. 2023 Dec 28. doi: 10.1002/lary.31247. PMID: 38153190



Timothy Wilson, MD

Cell-free and extracellular vesicle microRNAs with clinical utility for solid tumors

<https://pubmed.ncbi.nlm.nih.gov/39129372/>

Hayashi Y, Millen J-C, Ramos RI, Linehan JA, Wilson TG, Hoon DSB, and Bustos MA.
Mol Oncol. 2024 Aug 11. DOI: 10.1002/1878-0261.13709.

Complications and adverse events in lymphadenectomy of the inguinal area: worldwide expert consensus.

<https://pubmed.ncbi.nlm.nih.gov/38987232/>

Sotelo R, Sayegh AS, Medina LG, Perez LC, La Riva A, Eppler MB, Gaona J, Tobias-Machado M, Spiess PE, Pettaway CA, Lima Pompeo AC, Lima Mattos PA, Wilson TG, Villoldo GM, Chung E, Samaniego A, Ornellas AA, Pinheiro V, Brazão ES Jr, Subira-Rios D, Koifman L, Zequi SC, Pontillo Z HM, Rodrigues Calixto JR, Campos Silva R, Smithers BM, Garzon S, Haase O, Sommariva A, Fruscio R, Martins F, de Oliveira PS, Levi Sandri GB, Clementi M, Astigueta J, Metwally IH, Bharathan R, Jindal T, Nakamura Y, Abdel Mageed H, Jeevarajan S, Rodriguez Lay R, García-Perdomo HA, Rodríguez González O, Ghodoussipour S, Gill I, Cacciamani GE.
BJS Open. 2024 Jul 2;8(4):zrae056. doi: 10.1093/bjsopen/zrae056. PMID: 38987232

Diagnostic miRNA Signatures in Paired Tumor, Plasma, and Urine from Renal Cell Carcinoma Patients

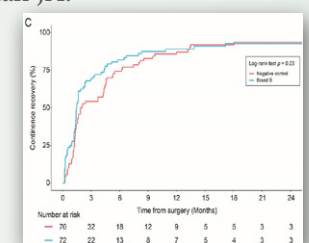
<https://pubmed.ncbi.nlm.nih.gov/37791385/>

Bustos MA, Gottlieb J, Choe J, Suyeon R, Lin S, Allen WM, Krasne DL, Wilson TG, Hoon DSB, Linehan JA.
Clinical Chemistry 2024 Oct 4:hvad133. DOI: 10.1093/clinchem/hvad133.

Impact of Cryopreserved Placental Allografts on Biochemical Recurrence in Prostate Cancer

<https://pubmed.ncbi.nlm.nih.gov/39272831/>

Gottlieb J, Hanes D, Bustos MA, Choe J, Luu A, Seizer D, Hoon DSB, Wilson TG.
Cancers 2024, 16(17), 2973. DOI: 10.3390/cancers16172973.



Long-term oncologic outcomes and complications of robot-assisted radical cystectomy for the treatment of urothelial carcinoma of the bladder.

<https://pubmed.ncbi.nlm.nih.gov/39443252/>

Lama DJ, Okunowo O, Yamzon J, Zhumkhwala AA, Wilson TG, Lau CS, Yuh BE, Chan KG.

Urol Oncol. 2024 Oct 22:S1078-1439(24)00687-2. doi: 10.1016/j.urolonc.2024.10.009. PMID: 39443252

MP61-11 Complications And Adverse Events In Lymphadenectomy Of The Inguinal Area (Cali)—A Worldwide Expert Consensus

<https://doi.org/10.1097/01.JU.0001009536.58867.87.11>

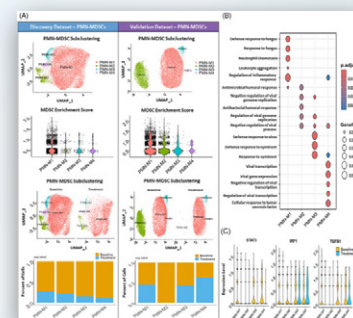
Luis G. Medina, Aref S. Sayegh, Valeria Celis, Veronica I. Rodriguez, Lorenzo Ramacciotti, Laura C. Perez, Anibal La Rivas, Michael B. Eppler, Jose Gaona, Marcos Tobias-Machado, Philippe E. Spiess, Curtis A. Pettaway, Antonio C. Lima, Pablo A. Lima, Timothy G. Wilson, ... View all authors

Reduction of myeloid-derived suppressor cells in prostate cancer murine models and patients following white button mushroom treatment.

<https://pubmed.ncbi.nlm.nih.gov/39390760/>

Wang X, Ma S, Twardowski P, Lau C, Chan YS, Wong K, Xiao S, Wang J, Wu X, Frankel P, Wilson TG, Synold TW, Present C, Dorff T, Yu J, Sadava D, Chen S.

Clin Transl Med. 2024 Oct;14(10):e70048. doi: 10.1002/ctm2.70048. PMID: 39390760



**Saint John's
Cancer Institute**
Saint John's Health Center
✚ Providence

Saint John's Cancer Institute

Saint John's Health Center

☩ Providence

Michael Ricks, Chief Executive

Ora Gordon, MD, MS, FACMGG, Executive Director of Cancer Services

Lynda Baxter, MBA, MPH, Executive Director of Saint John's Cancer Institute and Roy and Patricia Disney Family Cancer Center at Saint Joseph Medical Center

2024 Researchers

Allen, Warren MD

Assistant Professor of Pathology

Ascierto, Maria Ph.D. [2024]

Director Of Translational Immunology

Barkhoudarian, Garni MD

Director, Skull Base Microdissection Anatomy Laboratory, Associate Professor of Neurosurgery

Bilchik, Anton MD, Ph.D, MBA, FACS

Chief of General Surgery, Director of Gastrointestinal and Hepatobiliary Program, Director of Gastrointestinal Research Program, Professor Of Surgical Oncology

Bramen, Jennifer Ph.D.

Senior Program Manager of Clinical Research Brain Health Center

Bustos, Matias Ph.D.

Assistant Professor, Translational Molecular Medicine

Carrillo, Jose MD

Assistant Professor of Neurosciences, Translational Neurosciences

Essner, Richard MD, FACS

Co-Director, The Borstein Family Foundation Melanoma Program at Saint John's Cancer Institute, Professor Of Surgical Oncology

Fancher, Crystal MD, FACS

Breast Surgical Oncologist, Comprehensive Breast Program, Margie Petersen Breast Center, Assistant Professor of Surgical Oncology

Fischer, Trevan MD, FACS

Assistant Program Director of Complex General Surgical Oncology Fellowship, Assistant Professor of Surgical Oncology

Foshag, Leland MD, FACS

Director for Complex General Surgical Oncology Fellowship, Professor of Surgical Oncology

Goldfarb, Melanie MD, FACS, FACE

Director, Center for Endocrine Tumors and Disorders, Medical Director for Cancer Survivorship, Professor of Surgery

Gordon, Ora MD

Regional Director Southern California, Clinical Genetics and Genomics, Medical Director of Integrative Medicine at Disney Family Cancer Center, Professor of Genetics

Griffiths, Chester MD

Professor of Neurosurgery, Department of Translational Neurosciences, Otolaryngology - Endoscopic Skull-Base

Grumley, Janie MD, FACS

Breast Surgical Oncologist, Director, Comprehensive Breast Program, Margie Petersen Breast Center, Professor of Surgical Oncology

Hoon, Dave S.B. Ph.D

Director, Sjci Translational Research Professor and Director of Genomic Sequencing Center, Professor and Director of Dept Translational Molecular Medicine

Kelly, Daniel MD

Director of Brain Tumor Centers and Pituitary Disorders Program, Translational Neurosciences, Professor of Neurosurgery

Kesari, Santosh MD, Ph.D

Chair, Department of Translational Neurosciences, Director of Neuro-oncology, Professor of Neurosurgery

Krasne, David MD

Anatomic Pathology, Clinical and Laboratory Pathology, Professor of Pathology

Linehan, Jennifer MD

Director of Urology Translational Research, Associate Professor of Urology and Urologic Oncology

Margolin, Kim MD, FACP, FASCO

Medical Director of The Borstein Family Foundation Melanoma Program at Saint John's Cancer Institute

Merrill, David MD

Associate Professor of Neurosciences, Department of Translational Neurosciences

Meysami, Somayeh MD

Clinical Research Scientist, Pacific Brain Health Center, Assistant Professor of Neurosciences, Department of Translational Neurosciences

Porter, Verna MD

Professor of Neurosciences, Translational Neurosciences, Pacific Neurosciences Institute

Sharma, Akanksha MD

Neuro-Oncology, Translational Neurosciences, Assistant Professor, Pacific Neurosciences Institute

Singer, Frederick R. MD

Director of the Endocrine and Bone Disease Program Professor of Endocrinology, Saint John's Cancer Institute

Sivakumar, Walavan MD

Associate Professor of Neurosurgery, Translational Neurosciences

Tarpley, Jason MD

Director, Stroke & Neurovascular Center; Vascular and Interventional Neurology, Pacific Neurosciences Institute

Twardowski, Przemyslaw MD

Director of Clinical Research, Urology and Urologic Oncology, Professor of Medical Oncology and Urologic Oncology

Wagle, Naveed MD

Neuro-Oncology, Pacific Brain Tumor Center; Translational Neurosciences and Neurotherapeutics, Pacific Neurosciences Institute

Walgama, Evan MD [2024]

Otolaryngologist - Head and Neck Surgical Oncology

Wilson, Timothy MD

Director of Urology and Urologic Oncology Research Program, Professor And Chair of Urology And Urologic Oncology

Centers of Excellence

Brain Tumors and Neurosciences
Breast Surgery and Oncology
Endocrine Tumors and Disorders
Gastrointestinal and Hepatobiliary Tumors
Head & Neck Oncology
Melanoma, Skin and Soft Tissue Tumors
Minimally Invasive Chest and Thoracic Surgical Oncology
Translational Research
Urology and Urologic Oncology
Vasek Polak Radiation Oncology

About Saint John's Cancer Institute

Saint John's Cancer Institute (SJCI) is renowned for advancing therapeutics, translational science, and establishing standards of care since 1991. We foster robust fellowship programs, implement and initiate clinical trials, and collaborate with academic and industry partners worldwide. SJCI established the Sentinel Lymph Node Biopsy technique under the late Dr. Donald L. Morton, which has become the standard care for melanoma and breast cancer.

Today, our patients continue to have access to innovative treatments, therapeutics, and clinical trials. We are at the forefront of understanding the biology and genetics of cancer while expanding access to treatment for under-served communities through the Saint John's Health Center, Saint John's Health Center Foundation, and our partners.

www.saintjohnscancer.org

About Pacific Neuroscience Institute

The Pacific Neuroscience Institute (PNI) provides state-of-the-art care with a focus on minimally invasive surgical and interventional techniques, as well as novel targeted therapies that aim to restore and maintain quality of life. In collaboration with the Saint John's Cancer Institute,

PNI is focused on translational research and clinical trials as well as fellowship education and continuing medical education. Our physicians work side by side with our scientists to formulate real-time, personalized treatments and therapies for our patients, ensuring they receive the highest and most advanced level of care.

www.pacificneuroscienceinstitute.org